

# REINER

*jetStamp 790/790 MP*  
*jetStamp 792/792 MP*



Bedienungsanleitung

DE

Operating Manual

GB

Manual de instrucciones

ES

Mode d'emploi

FR

Manual de instruções

PT

Istruzioni per l'uso

IT

# Inhaltsverzeichnis

<b>I jetStamp</b>	<b>5</b>
1.1 Operating Element.....	6
1.2 Display and button functions.....	7
1.3 Menu access.....	7
<b>II Important Notes</b>	<b>8</b>
2.1 Rechargeable Batteries.....	8
<b>III Your Safety</b>	<b>9</b>
3.1 Safety, Description.....	9
3.2 Safety Notes on Rechargeable Batteries.....	10
3.3 Safety Notes.....	11
3.4 Secure Handling of Print Cartridges.....	11
<b>IV Preparation and Taking into Operation</b>	<b>12</b>
4.1 Commissioning jetStamp 790/790 MP.....	12
4.1.1 Inserting the batteries .....	13
4.1.2 Charging the batteries .....	14
4.2 Commissioning jetStamp 792/792 MP.....	15
4.3 Setting date and time .....	15
4.3.1 Setting the time .....	15
4.3.2 Setting the date .....	16
4.4 Inserting Printing Cartridge.....	17
4.5 Selecting language.....	18
4.6 Stored imprints.....	18
4.7 Selecting imprint.....	19
4.8 Overview of stored imprints.....	19
4.9 Selecting pretext.....	21
4.10 Printing.....	22
4.11 Install 790 PCset easy Software .....	23
4.11.1 Systems Requirements .....	23
4.11.2 Installing software .....	23
<b>V Using the jetStamp - Normal operation</b>	<b>24</b>
5.1 Numberer.....	24
5.1.1 Leading zero setting .....	25
5.1.2 Incremental/Decremental .....	25
5.1.3 Skip value .....	26
5.1.4 Repetition .....	26
5.1.5 Start value .....	27
5.1.6 Limit values (numberer) .....	27

5.1.6..1	Setting limit values.....	27
5.1.6..2	Deleting limit values.....	28
5.1.7	Stamping a constant number .....	28
<b>5.2</b>	<b>Favourites Set-up.....</b>	<b>29</b>
5.2.1	Select individual imprints .....	29
5.2.2	Reactivate all imprints again (factory-setting) .....	30
<b>5.3</b>	<b>Customer-specific imprints.....</b>	<b>31</b>
<b>VI</b>	<b>Set-up Module - Detailed access</b>	<b>32</b>
<b>6.1</b>	<b>Menu Entry.....</b>	<b>32</b>
<b>6.2</b>	<b>Selecting imprint.....</b>	<b>33</b>
<b>6.3</b>	<b>Setting date and time.....</b>	<b>33</b>
6.3.1	Setting the time .....	33
6.3.2	Setting the date .....	34
<b>6.4</b>	<b>DOUBLE PRINT.....</b>	<b>34</b>
<b>6.5</b>	<b>Selecting cleaning interval.....</b>	<b>34</b>
<b>6.6</b>	<b>Selecting language.....</b>	<b>35</b>
<b>6.7</b>	<b>Hour split.....</b>	<b>35</b>
<b>6.8</b>	<b>Summertime.....</b>	<b>36</b>
<b>6.9</b>	<b>Block/unblock print triggering.....</b>	<b>36</b>
<b>6.10</b>	<b>Password [SETUP].....</b>	<b>37</b>
<b>6.11</b>	<b>Password [CLOCK].....</b>	<b>37</b>
<b>6.12</b>	<b>Password [NO/TXT].....</b>	<b>38</b>
<b>6.13</b>	<b>Password [PRINT].....</b>	<b>38</b>
<b>6.14</b>	<b>Password Set-up.....</b>	<b>39</b>
<b>VII</b>	<b>The Software Application PCset easy</b>	<b>40</b>
<b>7.1</b>	<b>Prepare jetStamp 790/792 for 790 PCset easy.....</b>	<b>40</b>
<b>7.2</b>	<b>Starting the software.....</b>	<b>41</b>
<b>7.3</b>	<b>Check connection.....</b>	<b>41</b>
<b>7.4</b>	<b>Operating Interface.....</b>	<b>41</b>
<b>7.4.1</b>	<b>Menu bar .....</b>	<b>42</b>
7.4.1..1	Imprints.....	42
7.4.1..2	Settings.....	42
7.4.1..3	Help .....	43
<b>7.4.2</b>	<b>Toolbar .....</b>	<b>43</b>
7.4.2..1	Transfer .....	44
7.4.2..1..1	Set-up Mode.....	44
7.4.2..1..2	Transfer internal imprints .....	45
7.4.2..1..3	Transfer external imprints.....	46
<b>7.4.3</b>	<b>Objects .....</b>	<b>47</b>
<b>7.5</b>	<b>Example Workflow: Generate imprint.....</b>	<b>48</b>
7.5.1	Configure imprints .....	48
7.5.2	Transfer imprints to the jetStamp 790/792 .....	49
7.5.3	Printing imprint .....	50
<b>7.6</b>	<b>Settings objects.....</b>	<b>51</b>
7.6.1	Text .....	52
7.6.2	Time .....	53

7.6.2..1	Define own time format.....	54
7.6.3	Date .....	55
7.6.3..1	Define own date format.....	56
7.6.4	Numberer .....	58
<b>VIII</b>	<b>Maintenance</b>	<b>59</b>
8.1	Replace Print Cartridge.....	60
8.2	Clean Print Cartridge Contacts.....	61
8.3	Cleaning Nozzles.....	62
8.3.1	Automatic Cleaning of Nozzles .....	62
8.3.2	Manual Nozzle Cleaning .....	63
8.4	Selecting cleaning interval.....	63
8.5	Cleaning print carriage.....	64
8.6	Clean Housing.....	64
<b>IX</b>	<b>Recognising and Removing Interferences</b>	<b>65</b>
9.1	Operating and fault messages.....	65
9.2	Reset button.....	65
9.3	Troubleshooting typical errors for 790 PCset easy.....	66
<b>X</b>	<b>Technical Data and Accessories</b>	<b>67</b>
10.1	Rating Plate.....	67
10.2	Technical Data.....	68
10.3	Transport and Disposal.....	69
10.4	Accessories.....	69
<b>XI</b>	<b>Contact</b>	<b>70</b>
<b>XII</b>	<b>Operating Manual</b>	<b>71</b>
	<b>Index</b>	<b>72</b>

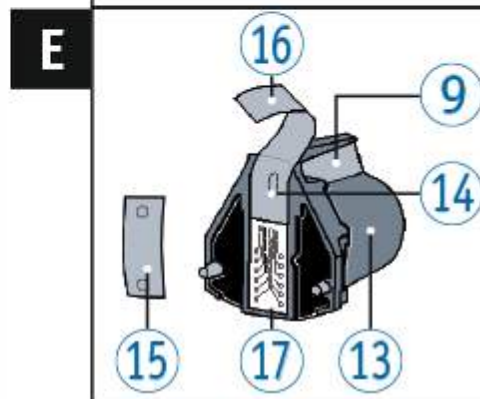
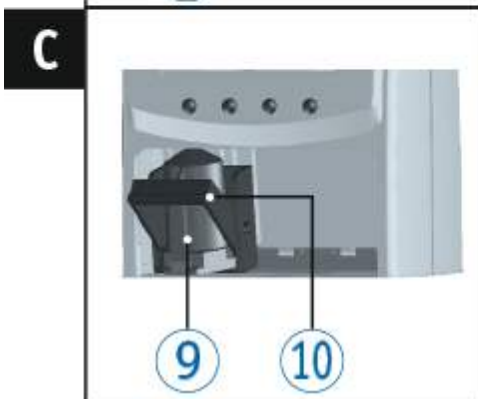
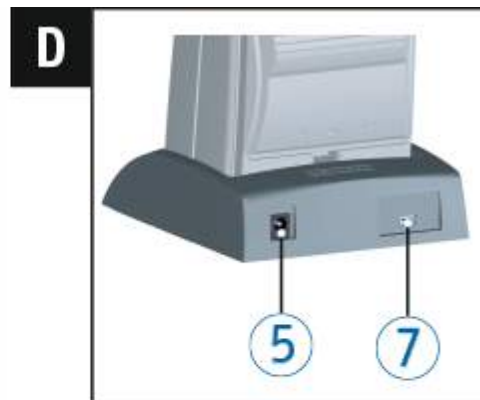
# 1 jetStamp

**REINER**

*jetStamp 790/790 MP*  
*jetStamp 792/792 MP*



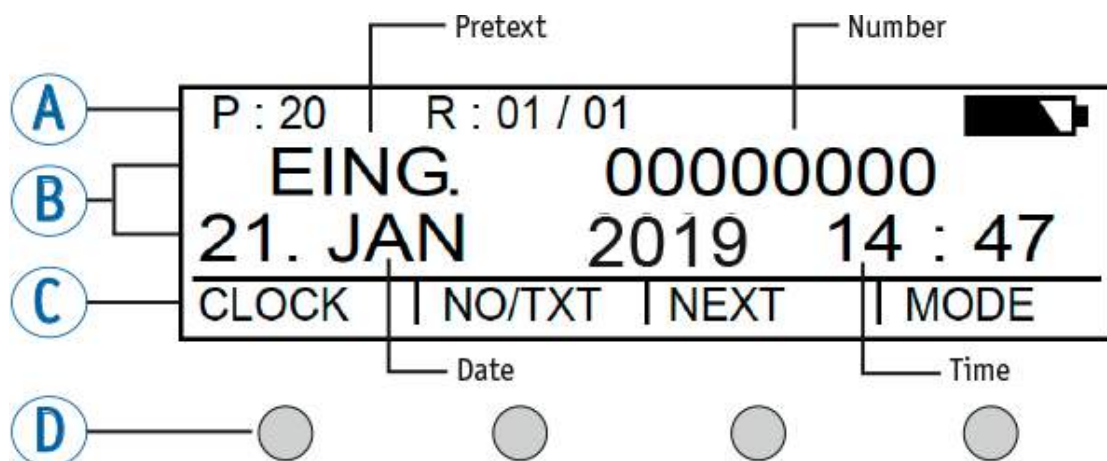
## 1.1 Operating Element



- |  |                                 |
|--|---------------------------------|
| ① Trigger                                    | ⑩ Locking rail                  |
| ② Battery compartment<br>(back of the stamp) | ⑪ Keypad                        |
| ③ Reset button (back of the stamp)           | ⑫ Display                       |
| ④ Charging station                           | ⑬ Cartridge                     |
| ⑤ Connection voltage supply                  | ⑭ Nozzles                       |
| ⑥ Green charging control light               | ⑮ Small felt pad                |
| ⑦ Mini-USB socket                            | ⑯ Protective film for cartridge |
| ⑧ Locking tab                                | ⑰ Cartridge contacts            |
| ⑨ Ink cartridge handle                       |                                 |

## 1.2 Display and button functions

The display is divided into the following three zones:



- a The number of the currently selected imprint (P : 01 ... P : 29)  
Numberer repetition value (e.g R : 01/01)
- b Selected imprint  
Top line: Pretext and number  
Bottom line: Date and time
- c Display menu bar with menu items and commands
- d Four buttons  
Each button is always assigned to the menu item or command that is displayed above it in the display menu bar.

## 1.3 Menu access

- ▶ Press [MODE] until [SETUP] appears in the display menu bar.
- ▶ Press [SETUP].  
"SETUP - MODULE SETTINGS" appears.
- ▶ Press [CALL].  
"SM - SETTINGS" appears.

## 2 Important Notes

Before using the *jetStamp* 790/792 for the first time, the operating manual must be read through, paying careful attention to the safety advice. In this way, you can avoid uncertainties and their accompanying safety risks when working with the electronic stamp, for the sake of your own safety and to prevent damage to the device.

### [Rechargeable Batteries](#)

## 2.1 Rechargeable Batteries

Battery charging is electrically controlled. This guarantees that the battery cells are charged in a way that is both optimised and gentle.

### Charging

- ▶ Completely charge the batteries before using the stamp for the first time. This takes about 14 hours. After this, charging time is a maximum of six hours.

The batteries do not reach their full capacity after the first charging. You must work on the basis that normal standby times will not be achieved.

### Reaching full capacity

Full capacity is reached after the batteries have been fully discharged and charged a number of times.

The batteries are fully discharged when [EMPTY BAT] appears in the display. The batteries are fully charged when the green charging control light is out.

### Changing the batteries

The display is reset when the batteries are removed. The *jetStamp* 790/790MP must then be inserted into the charging station for about three hours in order to synchronise the battery capacity display.



## 3 Your Safety

[Safety, Description](#)

[Safety Notes on Rechargeable Batteries](#)

[Safety Notes](#)

[Sicherer Umgang mit Druckpatronen](#)

### 3.1 Safety, Description

#### DANGER

Warnings of dangers that lead to **death or severe injury directly** if not observed.

#### WARNING

Warnings of dangers that may lead to **death or severe injury** if not observed.

#### CAUTION

Warnings of dangers that may lead to **injury** if not observed.

#### NOTICE

Warnings of dangers that may lead to **property damage** if not observed.

► You are asked to perform actions here.

 Notes and advice to make handling your *jetStamp 790/792* even easier.

## 3.2 Safety Notes on Rechargeable Batteries

Rechargeable batteries are subject to wear. A longer service life than six months cannot be warranted.

### **WARNING**

Danger of explosion at contact with fire.

- ▶ Never throw rechargeable batteries into fire.

### **Type use**

Use only the enclosed charging station  to charge the rechargeable batteries.

Only use rechargeable batteries type nickel metal hydride (NiMH, REINER item number: 791 213 - 100) of build AAA.

Always replace all four flat rechargeable batteries at once.  
Non-approved batteries can cause damage or operational faults.

- ▶ Only use prescribed rechargeable batteries.

### **Insertion**

Observe the polarity of the rechargeable batteries when inserting it, see icons!

### **Disposal**



#### **Defective or flat batteries**

Flat batteries of rechargeable batteries must not be disposed of in the household waste.

### 3.3 Safety Notes

**⚠ WARNING**

Danger of blinding in case of contact between ink and eyes.

- ▶ Never hold the *jetStamp 790/792* with its nozzles pointing at the face of persons!

**⚠ CAUTION**

Danger of tripping and damage to the device from device lines placed freely in the room.

- ▶ Place the device lines so that they do not pose any danger source!

**NOTICE**

Damage to the device due to improper transport.

- ▶ Only use packaging that provides protection from impact and shock to the device!

**NOTICE**

Damage to the device by moisture.

- ▶ Before commissioning, wait until the device has reached room temperature and is completely dry!

**i** Only have repairs performed by trained specialists.

### 3.4 Secure Handling of Print Cartridges

**⚠ WARNING**

Danger of blinding in case of contact between ink and eyes.

- ▶ Never hold the *jetStamp 790/792* with its nozzles pointing at the face of persons!

**⚠ CAUTION**

Damage to health from swallowing the ink.

- ▶ Do not swallow!
- ▶ Keep the print cartridge away from children.

## 4 Preparation and Taking into Operation

[Commissioning jetStamp 790/790 MP](#)

[Commissioning jetStamp 792/792 MP](#)

[Setting date and time](#)

[Inserting Printing Cartridge](#)

[Selecting language](#)

[Stored imprints](#)

[Selecting imprint](#)


[Overview of stored imprints](#)

[Selecting pretext](#)

[Printing](#)

[Install 790 PCset easy Software](#)

### 4.1 Commissioning jetStamp 790/790 MP

 Only connect the device to the PC after the 790 PCset easy software has been installed (see "[Install 790 PCset easy Software](#)").

 The batteries must be completely charged before using the stamp for the first time. This takes about 14 hours.

[Inserting the batteries](#)

[Charging the batteries](#)

#### 4.1.1 Inserting the batteries

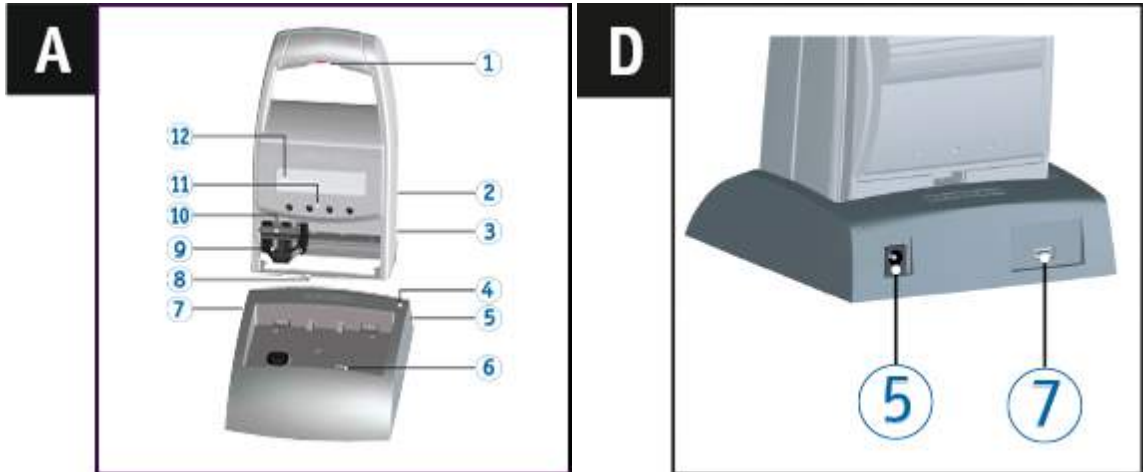
Inserting the batteries ⇨ Fig. **B**




- ▶ Open the battery compartment ② on the back of the stamp.
- ▶ Check for correct polarity and insert the batteries.
- ▶ Close the battery compartment ②.

## 4.1.2 Charging the batteries

Charging the batteries ⇨ Fig. **A** + **D**



- ▶ Put the *jetStamp* 790 in the charging station (4) with the locking tab (8) first.
- ▶ Connect the Mini-USB socket (7) of the charging station (4) with the mains unit with the USB cable.
- ▶ Connect mains unit to the mains.
- ▶ Batteries are charged when the green charging control light (6) is lit.
- ▶ Charging condition is displayed by the symbol  in the display (12) after a few minutes.

### Troubleshooting

The following message appears in the display (12) after inserting batteries "EMPTY BATTERY - NO IMPRINT POSSIBLE".


The batteries have not been recognised by the system.

- ▶ Press any key.

The display (12) is dark or lines appear. Unallowed inputs may have been made.

- ▶ Press the reset button (3).

## 4.2 Commissioning jetStamp 792/792 MP

 Only connect the device to the PC after the 790 PCset easy software has been installed (see "[Install 790 PCset easy Software](#)").

- ▶ Connect *jetStamp 792* to the connection electric stamp of the adapter.
- ▶ Connect mains unit to the connection voltage supply of the adapter.
- ▶ Push mains unit into the socket.

The display  shows "INPUT - TIME 1".

## 4.3 Setting date and time

Stored imprint P : 01 to P : 04 or P : 11 to P : 25 or customer-specific imprints (see "[Customer-specific imprints](#)") in which a time or date is contained must be selected (see "[Selecting imprints](#)").

[Setting the time](#)

[Setting the date](#)

### 4.3.1 Setting the time

- ▶ Press [MODE] until [CLOCK] appears in the display menu bar.
- ▶ Press [CLOCK].  
"INPUT - TIME 1" appears.
- ▶ To change the **minutes** value, press [VARY].
- ▶ To increase the number value, press [INC].
- ▶ To change the **hours** value, press [NEXT].
- ▶ To increase the number value, press [INC].
- ▶ To move directly to the next menu item, press [RETURN] once.  
– OR –
- ▶ To save changes and to return to the main menu, press [RETURN] twice.  
The main menu appears.

### 4.3.2 Setting the date

- ▶ Press [MODE] until [CLOCK] appears in the display menu bar.
- ▶ Press [CLOCK].
- ▶ Press [NEXT] until "INPUT - DATE 1" appears.
- ▶ To change the **year** value, press [VARY].
- ▶ To increase the year number, press [INC].
- ▶ To change the **month** value, press [NEXT].
- ▶ To increase the month number, press [INC].
- ▶ To move directly to the next menu item, press [RETURN] once.  
– OR –
- ▶ To save changes and to return to the main menu, press [RETURN] twice.  
press [RETURN] twice.



## 4.4 Inserting Printing Cartridge

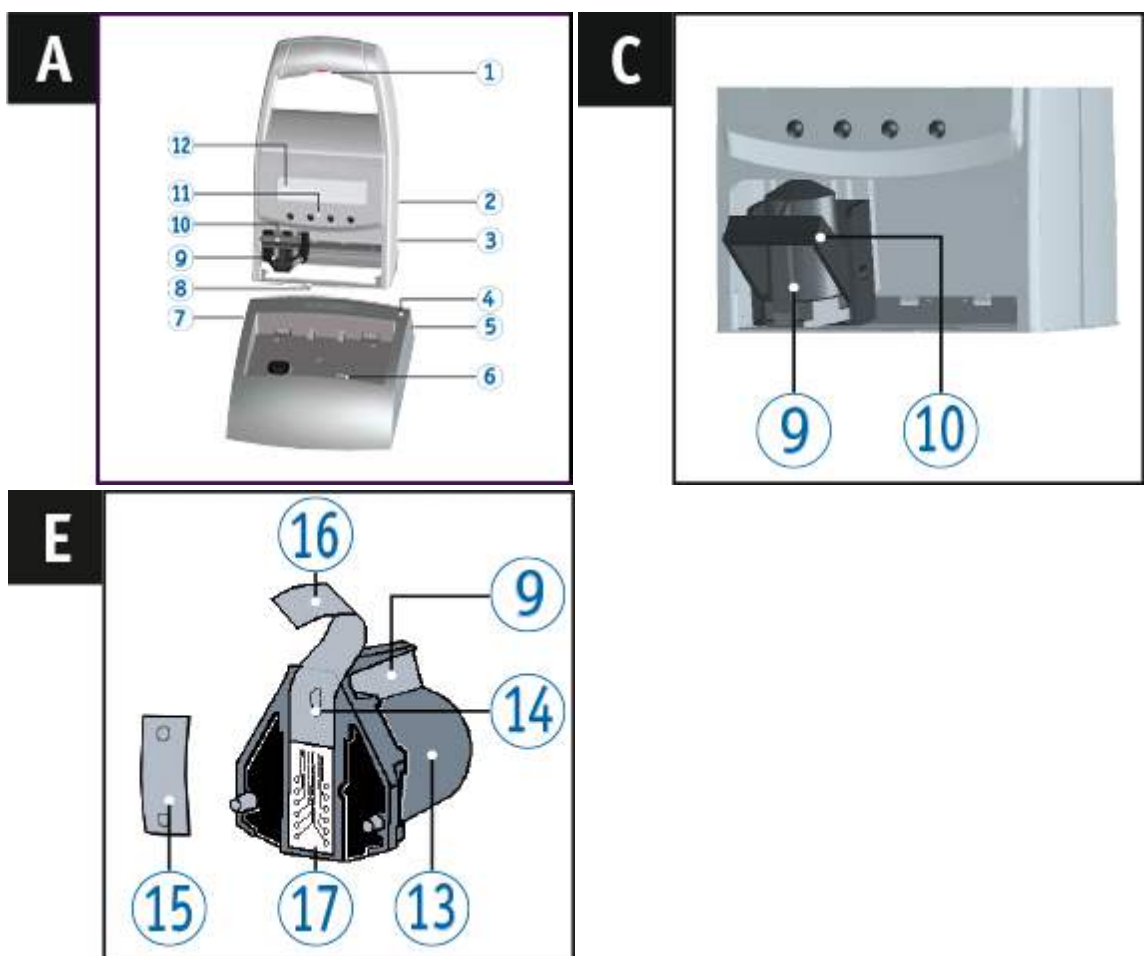
**i** When using special ink (MP), observe the notes in the operating instructions.

### **⚠ CAUTION**

Damage to health from swallowing the ink.

- ▶ Do not swallow!
- ▶ Keep the print cartridge away from children.

Inserting Printing Cartridge ⇒ Fig. **A** + **C** + **E**



- ▶ Remove the *jetStamp* 790/792 from the charging station **4**.
- ▶ Press [MODE] until [INKJET] appears in the display menu bar.
- ▶ Press [INKJET].  
The print carriage moves into a central position.
- ▶ Push the locking rail **10** as far back as it will go.
- ▶ Take the new cartridge **13** from its packaging and remove the protective film **16** from nozzles or Clip.
- ▶ When using standard ink hold the small felt pad **15** that is provided, against the cartridge nozzles **14** until some ink appears on the felt.

- ▶ Holding the cartridge handle 9, insert the cartridge 13 into the print carriage.
- ▶ Pull the locking rail 10 forward again until it locks into place.
- ▶ Press [INKJET].  
The print carriage moves to the stamping position.

## 4.5 Selecting language

Proceed as in Menu access (see "[Menu access](#)").

- ▶ Press [NEXT] until "LANGUAGE" appears.
- ▶ To adjust the language setting, press [VARY].
- ▶ To **increase** the **number value**, press [INC].
- ▶ To **decrease** the **number value**, press [DEC].

0 = German	5 = Portuguese
1 = French	6 = Flemish
2 = English	7 = Norwegian
3 = Italian	8 = Swedish
4 = Spanish	9 = Danish
- ▶ To move directly to the next menu item, press [RETURN] once.  
- OR -
- ▶ To save changes and to return to the main menu, press [RETURN] three times.  
The main menu appears.

## 4.6 Stored imprints

Number P : 01 to P : 25 are pre-set imprints (see "[Overview of stored imprints](#)"), which contain individual print fields such as "text prefix", "numberer", "time" and "date" and must be set before stamping.

A "Pretext" can be selected from 12 standard texts (see "[Selecting pretext](#)"). The contents of the displayed imprints are just examples and can be changed.

Numbers P : 26 to P : 29 are customer-specific imprints that can be created individually (see "[Customer-specific imprints](#)").

The active imprint is shown in the top left of the display, e.g. P : 09.

## 4.7 Selecting imprint

In order to make adjustments to the imprints, they have to be selected and activated first.

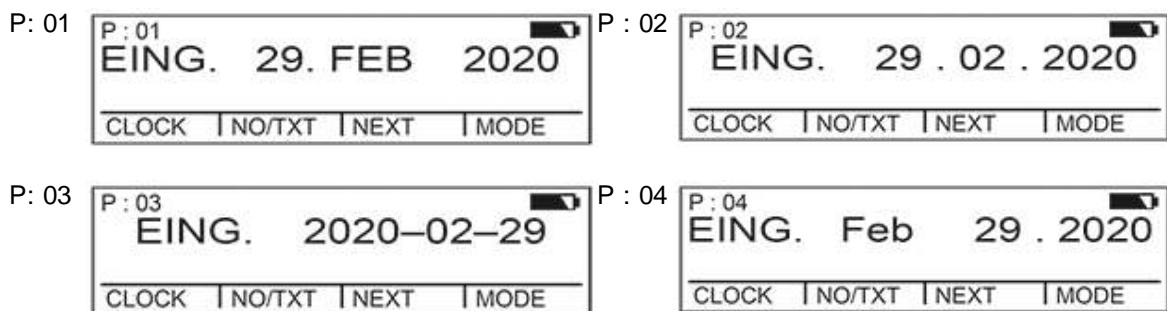
- ▶ Press [MODE] until [NEXT] appears in the display menu bar.
- ▶ Press [NEXT] until the required P : number appears.

**Other options for selected imprints:**

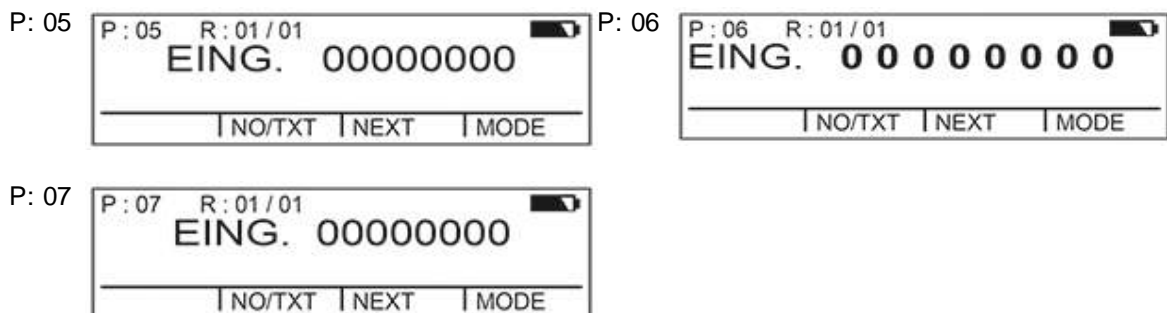
- [Favourites](#)
- Setup-Module under [STAMP PICTURE] (see "[Selecting imprint](#)").

## 4.8 Overview of stored imprints

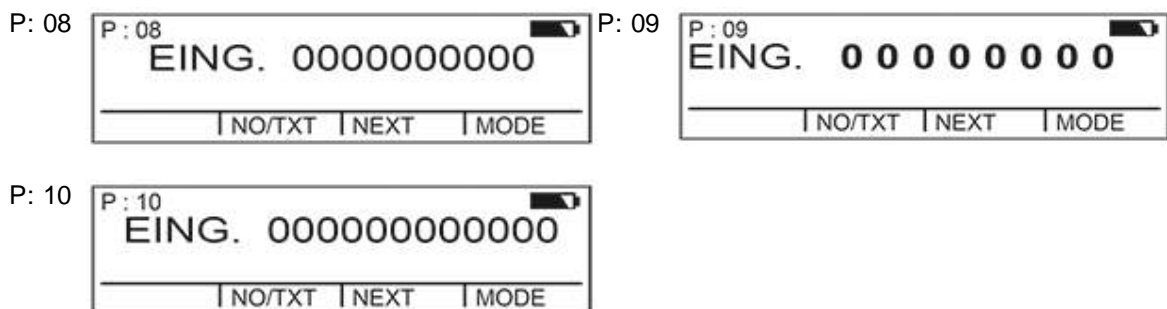
Imprints P : 01 to P : 04 = Pretext + Date



Imprints P : 05 to P : 07 = Pretext + Numberer



Imprints P : 08 to P : 10 = Pretext + constant number



Imprints P : 11 to P : 14 = Numberer + Pretext + Date

P: 11 P: 11 R: 01/01  
00000000  
EING. 29. FEB 2020  
CLOCK | NO/TXT | NEXT | MODE

P: 12 P: 12 R: 01/01  
00000000  
EING. 29. 02. 2020  
CLOCK | NO/TXT | NEXT | MODE

P: 13 P: 13 R: 01/01  
00000000  
EING. 2020-02-29  
CLOCK | NO/TXT | NEXT | MODE

P: 14 P: 14 R: 01/01  
00000000  
EING. Feb 29. 2020  
CLOCK | NO/TXT | NEXT | MODE

Imprints P : 15 to P : 19 = Pretext + Date + Time

P: 15 P: 15  
EING.  
29. FEB 2020 12 : 00  
CLOCK | NO/TXT | NEXT | MODE

P: 16 P: 16  
EING.  
29. 02. 2020 12 : 00  
CLOCK | NO/TXT | NEXT | MODE

P: 17 P: 17  
EING.  
2020-02-29 12 : 00  
CLOCK | NO/TXT | NEXT | MODE

P: 18 P: 18  
EING.  
Feb 29. 2020 12 : 00  
CLOCK | NO/TXT | NEXT | MODE

P: 19 P: 19  
EING.  
Feb 29. 2020 AM 12 : 00  
CLOCK | NO/TXT | NEXT | MODE

Imprints P : 20 to P : 25 = Pretext + Numberer + Date + Time

P: 20 P: 20 R: 01/01  
EING. 00000000  
29. FEB 2020 12 : 00  
CLOCK | NO/TXT | NEXT | MODE

P: 21 P: 21 R: 01/01  
EING. 00000000  
29. 02. 2020 12 : 00  
CLOCK | NO/TXT | NEXT | MODE

P: 22 P: 22 R: 01/01  
EING. 00000000  
2020-02-29 12 : 00  
CLOCK | NO/TXT | NEXT | MODE

P: 23 P: 23 R: 01/01  
EING. 00000000  
Feb 29. 2020 12 : 00  
CLOCK | NO/TXT | NEXT | MODE

P: 24 P: 24 R: 01/01  
EING. 00000000  
Feb 29. 2020 AM 12 : 00  
CLOCK | NO/TXT | NEXT | MODE

P: 25 P: 25 R: 01/01  
EING. 00000000  
29. FEB 2020 12 : 00  
CLOCK | NO/TXT | NEXT | MODE

## 4.9 Selecting pretext

The following pretexts can be set for the imprints P : 01 to P : 25.

RECVD	INV.	DRAFT	FAX
SENT	ORDER	PAID	ORIG
FILE	ENT.D	RECPT	REG.D

\_\_\_\_ (= pretext switched off)

- ▶ Press [MODE] until [NO/TXT] appears in the display menu bar.
- ▶ Press [NO/TXT].  
"INPUT - REPETITION" appears.
- ▶ Press [NEXT] until "INPUT - PRE TEXT" appears in the display menu bar.
- ▶ To select pretext,  
press [VARY].
- ▶ Press [NEXT] until the required pretext appears.
- ▶ To save selected pretext and to return to the main menu,  
press [RETURN] twice.  
The main menu appears.

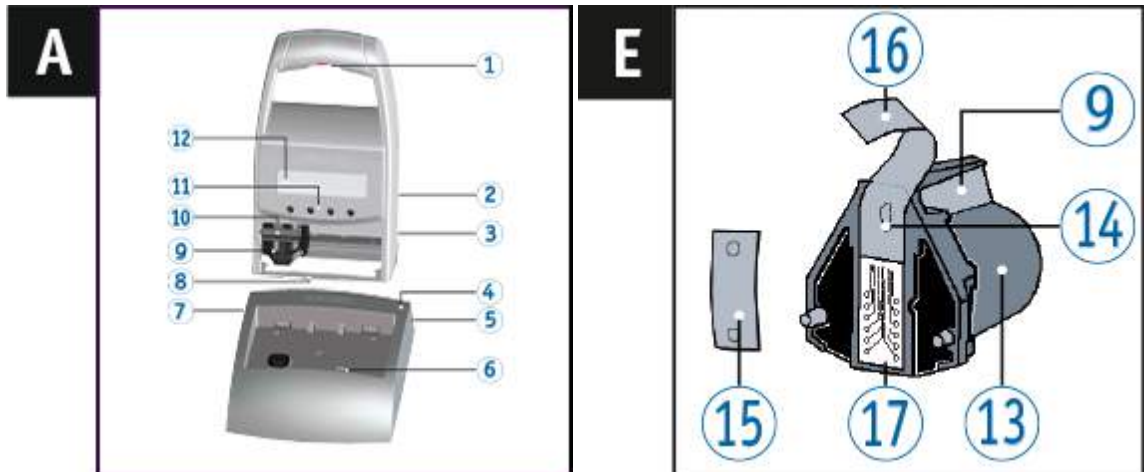
## 4.10 Printing

### WARNING

Danger of blinding in case of contact between ink and eyes.

- ▶ Never hold the *jetStamp* 790/792 with its nozzles **14** pointing at the face of persons!

Print imprints ⇒ Fig. **A** + **E**



- ▶ Set desired imprint (see "[Selecting imprint](#)").
- ▶ Put the device on the area to be printed on.
- ▶ Push trigger button **1**.  
The selected imprint is printed.

### Troubleshooting

If "IMPRINT BLOCKED" appears in the display, the print trigger is blocked.

- ▶ Press [QUIT] to release the print trigger once.
- ▶ Proceed as described on "[Block/unblock print triggering](#)" to release the print trigger permanently.

## 4.11 Install 790 PCset easy Software

[Systems Requirements](#)

[Installing software](#)

### 4.11.1 Systems Requirements

#### Supported REINER devices

- *jetStamp* 790
- *jetStamp* 792

#### Hardware

- PC with Pentium processor (also compatible) or higher
- Graphics adapter with a min. resolution of 800 x 600 pixels (at least 256 colours; optimal: TrueColor, 24 Bit, 16.78 million colours)
- RAM, at least 32 MB
- 10 MB free hard disc memory
- 1 free USB interface

#### Supported operating systems

- Windows 7, Windows 7 64 Bit, Windows 8, Windows 8 64 Bit

### 4.11.2 Installing software

Installation is only possible with administrator rights on the computer.

- ▶ Insert 790 PCset easy-CD into the drive.
- ▶ If the installation programme does not start up automatically, start the file "**setup.exe**".
- ▶ Observe the installation programme's instructions.

## 5 Using the jetStamp - Normal operation


[Numberer](#)

[Favourites Set-up](#)

[Customer-specific imprints](#)

### 5.1 Numberer

The numberer provides sequential numbering.  
Imprints P : 05 to P : 07, P : 11 to P : 14 or P : 20 to P : 25 or customer-specific imprints (see "[Customer-specific imprints](#)") in in which a numberer is contained must be selected (see "[Selecting imprint](#)").

 A second numberer can be inserted by a specialist vendor or the REINER support in customer-specific imprints (see "[Customer-specific imprints](#)").

[Leading zero setting](#)

[Incremental/Decremental](#)

[Skip value](#)

[Repetition](#)

[Start value](#)

[Limit values \(numberer\)](#)

[Stamping a constant number](#)



### 5.1.1 Leading zero setting

Leading zeros can be suppressed or printed, e.g 5 or 00000005.

Proceed as in Menu access (see "[Menu access](#)").

- ▶ Press [NEXT] until "PRE CHAR 0" appears.
- ▶ Press [VARY].
- ▶ To **display leading zeros**, press [ON].  
"PRE CHAR 0 ON" appears.
- ▶ To **suppress leading zeros**, press [OFF].  
"PRE CHAR 0 OFF" appears.
- ▶ To save changes and to return to the main menu, press [RETURN] three times.  
The main menu appears.

### 5.1.2 Incremental/Decremental

The numberer can count up (e.g. 10, 11, 12 ...) or down (e.g. 10, 9, 8, ...).

Imprint P : 05 to P : 07, P : 11 to P : 14 or P : 20 to P : 25 must be chosen (see "[Selecting imprint](#)").

Proceed as in Menu access (see "[Menu access](#)").

- ▶ Press [NEXT] until "MODE NUM 1" appears.
- ▶ Press [VARY].
- ▶ To **increase the number value**, press [INC].
- ▶ To **decrease the number value**, press [DEC].  
1 = Incremental  
2 = Decremental
- ▶ To save changes and to return to the main menu, press [RETURN] three times.  
The main menu appears.

If a second numberer is required, customer-specific imprints in the range from P : 26 to P : 29 must be selected (see "[Selecting imprint](#)").

Proceed as in Menu access (see "[Menu access](#)").

- ▶ Press [NEXT] until "MODE NUM 2" appears.
- Proceed using the same process.

### 5.1.3 Skip value

Indicates the interval at which the numberer counts on (e.g. 1,4,7... in steps of 3).  
Imprint P : 05 to P : 07, P : 11 to P : 14 or P : 20 to P : 25 must be chosen  
(see "[Selecting imprint](#)").

Proceed as in Menu access (see "[Menu access](#)").

- ▶ Press [NEXT] until "SKIP NUM 1" appears.
- ▶ Press [VARY].
- ▶ To **increase** the **number value**, press [INC].
- ▶ To **decrease** the **number value**, press [DEC].

 Skip value can be set in the range from 01 to 99.

- ▶ To save changes and to return to the main menu, press [RETURN] three times.  
The main menu appears.

To set the skip value for a second numberer, customer-specific imprints in the range from P : 26 to P : 29 must be selected (see "[Selecting imprint](#)").

Proceed as in Menu access (see "[Menu access](#)").

- ▶ Press [NEXT] until "SKIP NUM 2" appears.
- Proceed using the same process.

### 5.1.4 Repetition

Indicates the number of repetitions of an imprint. If, e.g., the value 3 is set, the numberer remains on the same number for three imprints before it counts on.  
The repeat factor can be set from 0 to 99.  
The numberer switches on at the value 0.

- ▶ Press [MODE] until [NO/TXT] appears in the display menu bar.
- ▶ Press [NO/TXT].  
"INPUT - REPETITION" appears.
  
- ▶ To change the **unit value** of the number, press [VARY].
- ▶ To increase the number value, press [INC].
- ▶ To decrease the number value, press [DEC].
  
- ▶ To change the **tens value** of the number, press [LEFT].
- ▶ To increase the number value, press [INC].
- ▶ To decrease the number value, press [DEC].
  
- ▶ To save changes and to return to the main menu, press [RETURN] twice.  
The main menu appears.

### 5.1.5 Start value

Defines the required number start value. If, for example, the value "15" is set, the numberer stamps, starting from this value.

- ▶ Press [MODE] until [NO/TXT] appears in the display menu bar.
- ▶ Press [NO/TXT].
- ▶ Press [NEXT] until "INPUT - NUMBERER 1" appears.
- ▶ Press [VARY].
- ▶ To **increase** the **number value**, press [INC].
- ▶ To **decrease** the **number value**, press [DEC].
- ▶ In order to move one digit to the left and modify this with [INC/DEC], press [LEFT].

 Special characters that don't change when counting, can be defined from the 2nd digit position from the right, e.g hyphen, slash, space.

- ▶ To save changes and to return to the main menu, press [RETURN] twice.  
The main menu appears.

### 5.1.6 Limit values (numberer)

Definition of the limit values that the numberer counts from and to, e.g. starting at 10, stopping at 20 and starting again from 10.

[Setting limit values](#)

[Deleting limit values](#)

#### 5.1.6.1 Setting limit values

- ▶ Press [MODE] until [COUNT] appears in the display menu bar.
- ▶ Press [COUNT] until the required minimum value is set.
- ▶ Press [MODE] until [N1 MIN] appears.
  
- ▶ To save the **minimum value**, press [N1 MIN].  
[N1 MIN] changes to [N1 MIN t].
  
- ▶ Press [MODE] until [COUNT] appears.
- ▶ Press [COUNT] until the required maximum value is set.
- ▶ Press [MODE] until [N1 MAX] appears.
  
- ▶ To save the **maximum value**, press [N1 MAX].  
[N1 MAX] changes to [N1 MAX t].  
The limit values are now set.

### 5.1.6.2 Deleting limit values

- ▶ Press [MODE] until [N1 CLR] appears in the display menu bar.
- ▶ To delete the set limit values, press [N1 CLR].

### 5.1.7 Stamping a constant number

You can also stamp using a number that doesn't change. Imprint P : 08 to P : 10 must be chosen (see "[Selecting imprint](#)").

- ▶ Press [MODE] until [NO/TXT] appears in the display menu bar.
- ▶ Press [NO/TXT].  
"INPUT - PRE TEXT" appears.
- ▶ Press [NEXT].  
"INPUT - NUMBERER 1" appears.
- ▶ Press [VARY].
- ▶ To **increase** the **number value**, press [INC].
- ▶ To **decrease** the **number value**, press [DEC]
- ▶ In order to move one digit to the right and modify this with [INC/DEC], press [RIGHT].

 [Special characters can be set at each digit position.](#)

- ▶ To save changes and to return to the main menu, press [RETURN] twice.  
The main menu appears.

## 5.2 Favourites Set-up

Using this function, you can reduce the 29 programmed imprints to the number that you actually require, e.g. only four visible imprints. In this way, you can switch more quickly between the individual imprints.

In stamping mode, imprints can be selected individually with [NEXT].

- ▶ Press [MODE] until [SETUP] appears in the display menu bar.
- ▶ Press [SETUP].  
"SETUP - MODULE SETTINGS" appears.
- ▶ Press [CALL].  
"SM - SETTINGS" appears.
- ▶ Press [NEXT] until "SET STAMP PICT" appears.
- ▶ Press [CALL].  
"SEL ST PICT ALL ON/OFF" appears.

[Select individual imprints](#)

[Reactivate all imprints again \(factory-setting\)](#)

### 5.2.1 Select individual imprints

- ▶ Press [NEXT] until the required imprint appears.
- ▶ Press [VARY].
- ▶ To **select** an imprint,  
press [ON].  
- OR -
- ▶ To **deselect** an imprint,  
press [OFF].
- ▶ Repeat the process with all required imprints.
- ▶ To move to the next imprint, press [RETURN] once.  
Or press [NEXT] to access the next imprint.  
- OR -
- ▶ To save changes and to return to the main menu,  
press [RETURN] four times.  
The main menu appears.

### 5.2.2 Reactivate all imprints again (factory-setting)

- ▶ Press [VARY].
- ▶ Press [ON].  
"SEL ST PICT ALL ON", i.e. all imprints are selected.
- ▶ To save changes and to return to the main menu,  
press [RETURN] four times.  
The main menu appears.  
- OR -
- ▶ Press [OFF].  
"SEL ST PICT ALL OFF", i.e. all imprints are deselected.

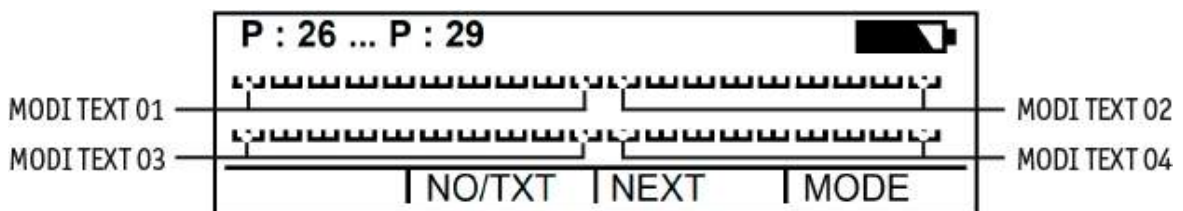
## 5.3 Customer-specific imprints

Customer-specific imprints, P : 26 to P : 29, can be created and transferred with the 790 PCset easy.

– OR –

Individual texts with a maximum of two lines can be created. Each line can contain a maximum of 20 characters.

**i** In the factory settings, the imprints 26 to 29 are not assigned and can be assigned text in the device. After transfer of customer-specific imprints with the PCset easy, individual texts can only be generated at the device again after an empty text, date, time and/or numbering was transferred.



- ▶ Press [MODE] until [NO/TXT] appears in the display menu bar.
- ▶ Press [NO/TXT].  
"INPUT - MODI TEXT 01" appears.
- ▶ To insert an individual text in "MODI TEXT 01", press [VARY].  
The following characters are available:  
0 ... 9    A ... Z    Ç Ä Å É Æ Ö Ü £ Ø Ñ Á À ¥  
Ê Ë Ó Ú € Í \$ & \* + , - . / : @
- ▶ Press [INC].  
The character sequence starts with "0" and ends with "@".
- ▶ Press [DEC].  
The character sequence starts with "@" and ends with "0".
- ▶ To move one input character to the right and to change it with [INC/DEC], press [RIGHT].
- ▶ To save "MODI TEXT 01", press [RETURN].
- ▶ Press [NEXT].  
"INPUT - MODI TEXT 02" appears.

Proceed using the same process.

- ▶ To save changes and to return to the main menu, press [RETURN] twice.  
The main menu appears.

## 6 Set-up Module - Detailed access

[Menu Entry](#)

[Selecting imprint](#)

[Setting date and time](#)

[DOUBLE PRINT](#)

[Selecting cleaning interval](#)

[Selecting language](#)

[Hour split](#)

[Summertime](#)

[Block/unblock print triggering](#)

[Password \[SETUP\]](#)

[Password \[CLOCK\]](#)

[Password \[NO/TXT\]](#)

[Password \[PRINT\]](#)

[Password Set-up](#)

### 6.1 Menu Entry

The Setup-Module has two sub-sections.

"SETUP - MODULE UPDATE" can only be used in connection with the 790 PCset easy.

"SETUP - MODULE SETTINGS" further extensive settings that influence the imprint and handling can be carried out.

- ▶ Press [MODE] until [SETUP] appears in the display menu bar.
- ▶ Press [SETUP].  
"SETUP - MODULE SETTINGS" appears.
- ▶ Press [CALL].  
"SM - SETTINGS" appears.



## 6.2 Selecting imprint

Proceed as in Menu access (see "[Menu access](#)").

- ▶ Press [NEXT] until "STAMP PICTURE" appears.
- ▶ To set the required imprint number, press [VARY].
- ▶ To **increase** the **number value**, press [INC].
- ▶ To **decrease** the **number value**, press [DEC].
- ▶ To move directly to the next menu item, press [RETURN] once.  
- OR -
- ▶ To save changes and to return to the main menu, press [RETURN] three times.  
The main menu appears.

## 6.3 Setting date and time

Stored imprint P : 01 to P : 04 or P : 11 to P : 25 or customer-specific imprints (see "[Customer-specific imprints](#)") in which a time or date is contained must be selected (see "[Selecting imprints](#)").

[Setting the time](#)

[Setting the date](#)

### 6.3.1 Setting the time

- ▶ Press [MODE] until [CLOCK] appears in the display menu bar.
- ▶ Press [CLOCK].  
"INPUT - TIME 1" appears.
- ▶ To change the **minutes** value, press [VARY].
- ▶ To increase the number value, press [INC].
- ▶ To change the **hours** value, press [NEXT].
- ▶ To increase the number value, press [INC].
- ▶ To move directly to the next menu item, press [RETURN] once.  
– OR –
- ▶ To save changes and to return to the main menu, press [RETURN] twice.  
The main menu appears.

### 6.3.2 Setting the date

- ▶ Press [MODE] until [CLOCK] appears in the display menu bar.
- ▶ Press [CLOCK].
- ▶ Press [NEXT] until "INPUT - DATE 1" appears.
- ▶ To change the **year** value, press [VARY].
- ▶ To increase the year number, press [INC].
- ▶ To change the **month** value, press [NEXT].
- ▶ To increase the month number, press [INC].
- ▶ To move directly to the next menu item, press [RETURN] once.  
– OR –
- ▶ To save changes and to return to the main menu, press [RETURN] twice.  
press [RETURN] twice.

## 6.4 DOUBLE PRINT

 **DOUBLE PRINT** is only available when using MP cartridges.

For an imprint with intense colour. Device stamps the imprints twice.

Proceed as in Menu access (see "[Menu access](#)").

- ▶ Press [MODE] until "DOUBLE PRINT" appears.
- ▶ Press [CALL].
- ▶ To **activate** "DOUBLE PRINT", press [ON].
- ▶ To **deactivate** "DOUBLE PRINT", press [OFF].
- ▶ To move directly to the next menu item, press [RETURN] once.  
- OR -
- ▶ To save changes and to return to the main menu, press [RETURN] three times.  
The main menu appears.

## 6.5 Selecting cleaning interval

The duration until possible drying of the ink at the nozzles depends on the ambience temperature and humidity. At the corresponding configuration, the *jetStamp 790/792* performs self-cleaning of the nozzles at regular intervals. Small amounts of ink are ejected here. At increased temperatures and low humidity, the cleaning interval must be increased accordingly.

Proceed as in Menu access (see "[Menu access](#)").

- ▶ Press [NEXT] until "CLEAN INTERVAL" appears.
- ▶ To adjust the cleaning strength, press [CALL].
- ▶ To **increase** the **number value**, press [INC].
- ▶ To **decrease** the **number value**, press [DEC].

- 0 = No cleaning
- 1 = Standard cleaning
- 2 = Mid-strength cleaning
- 3 = Strong cleaning
- ▶ To move directly to the next menu item, press [RETURN] once.
- OR -
- ▶ To save changes and to return to the main menu, press [RETURN] three times. The main menu appears.

## 6.6 Selecting language

Proceed as in Menu access (see "[Menu access](#)").

- ▶ Press [NEXT] until "LANGUAGE" appears.
- ▶ To adjust the language setting, press [VARY].
- ▶ To **increase** the **number value**, press [INC].
- ▶ To **decrease** the **number value**, press [DEC].
  - 0 = German            5 = Portuguese
  - 1 = French            6 = Flemish
  - 2 = English           7 = Norwegian
  - 3 = Italian            8 = Swedish
  - 4 = Spanish           9 = Danish
- ▶ To move directly to the next menu item, press [RETURN] once.
- OR -
- ▶ To save changes and to return to the main menu, press [RETURN] three times. The main menu appears.

## 6.7 Hour split

The hour split function allows you to choose between showing hours broken down into 60 or 100 minutes.

Proceed as in Menu access (see "[Menu access](#)").

- ▶ Press [NEXT] until "SPLIT HOUR 60M" appears.
- ▶ Press [VARY].
- ▶ 1 hour = 60 minutes.  
Press [ON].
- OR -
- ▶ 1 hour = 100 minutes.  
Press [OFF].
- ▶ To move directly to the next menu item, press [RETURN] once.
- OR -
- ▶ To save changes and to return to the main menu, press [RETURN] three times. The main menu appears.

## 6.8 Summertime

Proceed as in Menu access (see "[Menu access](#)").

- ▶ Press [NEXT] until "SUMMERTIME" appears.
- ▶ Press [VARY].
- ▶ To **increase** the **number value**, press [INC].
- ▶ To **decrease** the **number value**, press [DEC].
  - 0 = No summertime change
  - 1 = European summertime change from 1996
  - 2 = European summertime change prior to 1996
  - 3 = American summertime change
- ▶ To move directly to the next menu item, press [RETURN] once.
  - OR -
- ▶ To save changes and to return to the main menu, press [RETURN] three times.

The main menu appears.

## 6.9 Block/unblock print triggering

Blocking print triggering protects against unintentional or unwanted printing. If print triggering is already protected by a password, this has to be entered. The factory-set password is 2468.

Proceed as in Menu access (see "[Menu access](#)").

- ▶ Press [NEXT] until "BLOCK IMPRINT 0/1/2/3" appears.
- ▶ Press [VARY].
- ▶ To **increase** the **number value**, press [INC].
- ▶ To **decrease** the **number value**, press [DEC].
  - 0 = No print blocking
  - 1 = Print blocking after 60 seconds
  - 2 = Print blocking after 30 seconds
  - 3 = Print blocking after 15 seconds
- ▶ To move directly to the next menu item, press [RETURN] once.
  - OR -
- ▶ To save changes and to return to the main menu, press [RETURN] three times.

The main menu appears.

## 6.10 Password [SETUP]

Blocks access to the Setup-Module with a password and protects it against misuse. The factory-set password is 2468.

Proceed as in Menu access (see "[Menu access](#)").

- ▶ Press [NEXT] until "PASSW SETUP" appears.
- ▶ Press [VARY].
- ▶ To **activate** the password input, press [ON].  
Password input is active.
- ▶ To modify the password, press [RETURN] once (see "[Password Set-up](#)").  
- OR -
- ▶ In order to **deactivate** password input, enter the defined password.
- ▶ To confirm the password, press [RETURN] once.  
Password input can now be deactivated.
- ▶ To deactivate password input, press [OFF].
- ▶ To move directly to the next menu item, press [RETURN] once.  
- OR -
- ▶ To save changes and to return to the main menu, press [RETURN] three times.  
The main menu appears.

## 6.11 Password [CLOCK]

Blocks access to the clock setting module with a password and protects it against misuse. The factory-set password is 2468.

Proceed as in Menu access (see "[Menu access](#)").

- ▶ Press [NEXT] until "PASSW CLOCK" appears.
- ▶ Press [VARY].
- ▶ To **activate** the password input, press [ON].  
Password input is active.
- ▶ To modify the password, press [RETURN] once (see "[Password Set-up](#)").  
- OR -
- ▶ In order to **deactivate** password input, enter the defined password.
- ▶ To confirm the password, press [RETURN] once.  
Password input can now be deactivated.
- ▶ To deactivate password input, press [OFF].
- ▶ To move directly to the next menu item, press [RETURN] once.  
- OR -
- ▶ To save changes and to return to the main menu, press [RETURN] three times.  
The main menu appears.

## 6.12 Password [NO/TXT]

Blocks access to the NO/TXT menu with a password and protects it against misuse. The factory-set password is 2468.

Proceed as in Menu access (see "[Menu access](#)").

- ▶ Press [NEXT] until "PASSW NO/TXT" appears.
- ▶ Press [VARY].
- ▶ To **activate** the password input, press [ON].  
Password input is active.
- ▶ To modify the password, press [RETURN] once (see "[Password Set-up](#)").  
- OR -
- ▶ In order to **deactivate** password input, enter the defined password.
- ▶ To confirm the password, press [RETURN] once.  
Password input can now be deactivated.
- ▶ To deactivate password input, press [OFF].
- ▶ To move directly to the next menu item, press [RETURN] once.  
- OR -
- ▶ To save changes and to return to the main menu, press [RETURN] three times.  
The main menu appears.

## 6.13 Password [PRINT]

Blocks access to stamping with a password and protects it against misuse. The factory-set password is 2468.

Proceed as in Menu access (see "[Menu access](#)").

- ▶ Press [NEXT] until "PASSW PRINT" appears.
- ▶ Press [VARY].
- ▶ To **activate** the password input, press [ON].  
Password input is active.
- ▶ To modify the password, press [RETURN] once (see "[Password Set-up](#)").  
- ODER -
- ▶ In order to **deactivate** password input, enter the defined password.
- ▶ To confirm the password, press [RETURN] once.  
Password input can now be deactivated.
- ▶ To deactivate password input, press [OFF].
- ▶ To save changes and to return to the main menu, press [RETURN] three times.  
The main menu appears.

## 6.14 Password Set-up

Proceed as in Menu access (see "[Menu access](#)").

- ▶ Setting one of the passwords to [ON].
- ▶ Press [RETURN].
- ▶ To **increase** the **number value**, press [INC].
- ▶ To **decrease** the **number value**, press [DEC].
- ▶ To move one character to the right and to change it with [INC/DEC], press [RIGHT].
- ▶ To save changes and to return to the main menu, press [RETURN] three times.  
The main menu appears.

## 7 The Software Application PCset easy

[Prepare jetStamp 790/792 for 790 PCset easy](#)

[Starting the software](#)

[Check connection](#)

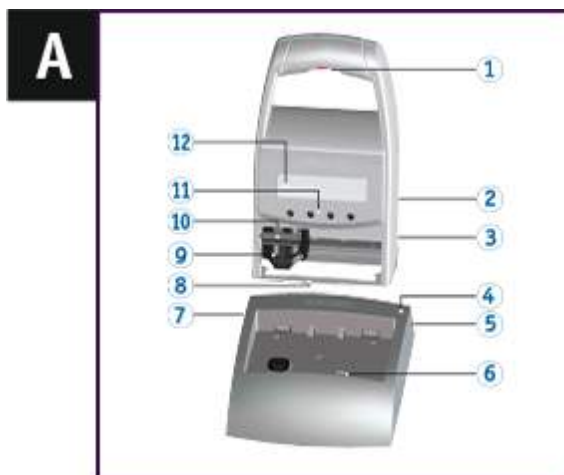
[Operating Interface](#)

[Example Workflow: Generate imprint](#)

[Settings objects](#)

### 7.1 Prepare jetStamp 790/792 for 790 PCset easy

Prepare *jetStamp 790/792* for 790 PCset easy ⇨ Fig. **A**




**i** For the device to be correctly recognised by the computer, the PCset easy software must be installed first.

- ▶ Connect Mini-USB socket **7** to the PC via the USB cable
- ▶ Push [MODE] until the display menu bar [SETUP] appears.
- ▶ Push [SETUP].  
"SETUP - MODULE SETTINGS" appears.
- ▶ Push [NEXT].  
"SETUP - MODULE UPDATE" appears.
- ▶ Push [CALL].  
"SM - UPDATE FIRMWARE ALL" appears.
- ▶ Push [NEXT] twice.  
"SM - UPDATE STAMP PICTURE" appears.
- ▶ Push [START].  
"SM - UPDATE STAMP PICTURE ACTIVE" appears.



## 7.2 Starting the software

- ▶ Double-click the **790 PCset easy symbol** . The PCset easy software is started.

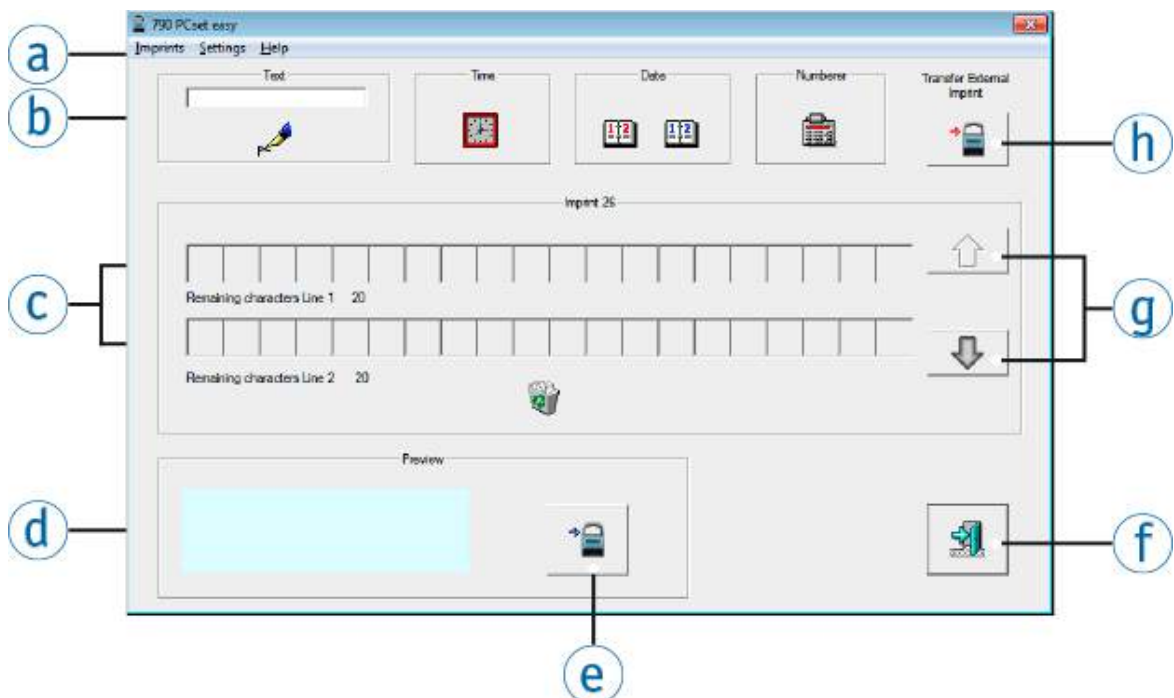
## 7.3 Check connection

- ▶ To check whether the PC is correctly connected to the *jetStamp 790/792*, click "Info" in the menu "Help". If the window "Info about 790 PCset easy" appears, the PC is connected to the *jetStamp 790/792* correctly. If the window "Port settings" appears, observe notes in chapter "[790 PCset easy Troubleshooting](#)".

## 7.4 Operating Interface



The operating interface is structured in four areas:

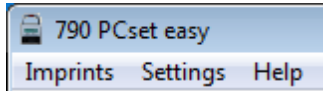
- a) Menu bar
- b) Toolbar
- c) 2 lines for design of the imprints
- d) Preview.



- |                            |                                  |
|----------------------------|----------------------------------|
| a) Menu bar                | e) Transfer                      |
| b) <a href="#">Toolbar</a> | f) Exit                          |
| c) Imprints                | g) Arrows                        |
| d) Preview                 | h) Transfer of external imprints |

## 7.4.1 Menu bar

In addition to the functions in the toolbar , you will find a menu bar  of the 790 PCset easy application.




In the menu bar, you can find both the generally common, self-explanatory standard commands and 790 PCset easy-specific menu commands.

[Imprints](#)

[Settings](#)

[Help](#)


### 7.4.1.1 Imprints

 Imprints are user dependant.

Whenever the 790 PCset easy software is closed it saves the current imprints to the user's private data which is not accessible to other users.

Funktion	Beschreibung
Open	Load imprints saved with 790 PCset easy for processing.
Save as	Save imprints.
Transfer	Transfer currently displayed imprints to the <i>jetStamp</i> 790/792.
Exit	Terminates the PCset easy.

### 7.4.1.2 Settings

 Properties are user independant.

But the 790 PCset easy software Settings (Properties of Time, Data, Numberer, Port Settings) are universal and same for all PC users.

Funktion	Beschreibung
Port settings	Settings for connection of the PC to the <i>jetStamp</i> 790/792.

### 7.4.1.3 Help







Function	Description
Help	Calling online help.
Info	Information on the connected <i>jetStamp 790/792</i> .

## 7.4.2 Toolbar

Objects can be pulled into the line by Drag & Drop.



Up to four imprints (P: 26 to P: 29) can be generated and transmitted.

An imprint may have up to two lines and up to 20 characters per line.

Toolbar 	Command	Description
	Transfer of external imprints	Transfer external imprints in the format .pcr from a data carrier to the <i>jetStamp 790/792</i> .
	Select imprints P : 26 to P : 29	Use the arrows switch between display of the imprints P : 26 to P : 29 for configuration.
	Waste basket	To delete an icon, you can Drag & Drop it in the waste bin.
	Transfer	Transfer imprints P : 26 to P : 29 to the <i>jetStamp 790/792</i> .
	Exit	Terminates the PCset easy.

### 7.4.2.1 Transfer

Up to four imprints can be transmitted to the *jetStamp 790/792*.  
The 790 PCset easy transmits the imprints P : 26 to P: 29.

-  The transmission overwrites all imprints (P : 26 to P: 29) saved in the device.
-  The 790 PCset easy and *jetStamp 790/792* can only exchange data with the device in setup mode (see "[Set-up Mode](#)"). The data for the information dialogue cannot be read in either.

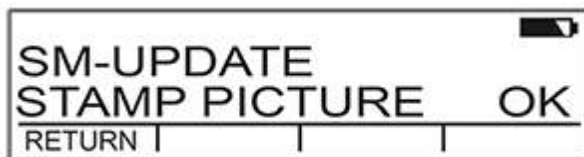
[Set-up Mode](#)

[Transfer internal imprints](#)

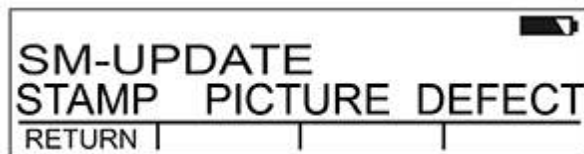
[Transfer external imprints](#)

#### 7.4.2.1.1 Set-up Mode

- ▶ Push [MODE].
- ▶ Push [SETUP].
- ▶ Push [NEXT].
- ▶ Push [CALL].
- ▶ Push [NEXT] twice.
- ▶ Push [START].
- ▶ *jetStamp 790/792* is ready for the transmission.






- ▶ Transmission successful.



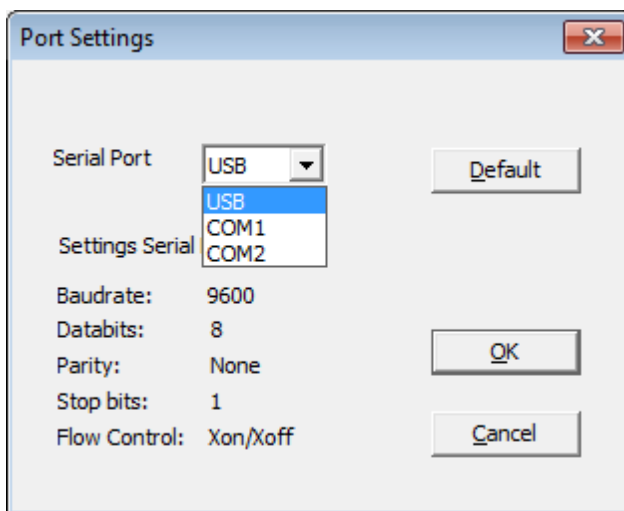
- ▶ Transmission failed.

## 7.4.2.1.2 Transfer internal imprints

- ▶ Select the tab "Imprints" in the menu bar  and click "Transmit".  
-OR-
- ▶ Click the button .




-  The transmission fails when the 790 PCset easy cannot connect to the *jetStamp 790/792*. Possible causes:
- *jetStamp* not connected
  - *jetStamp* not ready
  - "Settings serial port" are not correct.

The dialogue "Port Settings" appears before the dialogue "Transmit".

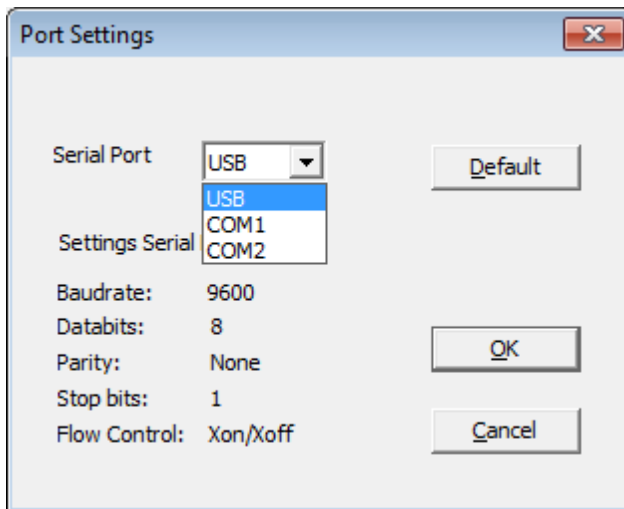


- ▶ If the *jetStamp* is connected to the computer via USB, select "USB" in the dialogue field (*jetStamp* with a serial number above 5000).  
- OR -
- ▶ If the *jetStamp* is connected to the computer via a COM interface, select "COM1" in the dialogue field (*jetStamp* with a serial number below 5000).
- ▶ Transmission starts automatically.

## 7.4.2.1.3 Transfer external imprints

-  You can also procure imprints from REINER or your vendor as a \*.pcr file and then install them on your *jetStamp 790/792* via the button. 
-  The transmission fails when the 790 PCset easy cannot connect to the *jetStamp 790/792*. Possible causes:
  - *jetStamp* not connected
  - *jetStamp* not ready
  - "Settings serial port" are not correct.

The dialogue "Port Settings" appears before the dialogue "Transmit".









- ▶ If the *jetStamp* is connected to the computer via USB, select "USB" in the dialogue field (*jetStamp* with a serial number above 5000).
  - OR -
- ▶ If the *jetStamp* is connected to the computer via a COM interface, select "COM1" in the dialogue field (*jetStamp* with a serial number below 5000).
- ▶ Transmission starts automatically.

### 7.4.3 Objects

Imprints are assembled from objects of the four object groups described below. Objects can be positioned by Drag & Drop.

 Double-click or right-click the symbols in the toolbar  to call further settings.

Toolbar 	Command	Description
	Text	The text in the text input field is inserted into the lines of the imprints by Drag and Drop a text object.
	Time	A time object can be positioned either in the first or second line.
 	Date	Only one date object per line is admissible. The calendar dates of the different date objects can be set deviating from each other.
	Numberer	A numberer object can be positioned either in the first or second line. The numberer serves consecutive numbering.




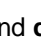
## 7.5 Example Workflow: Generate imprint

[Configure imprints](#)

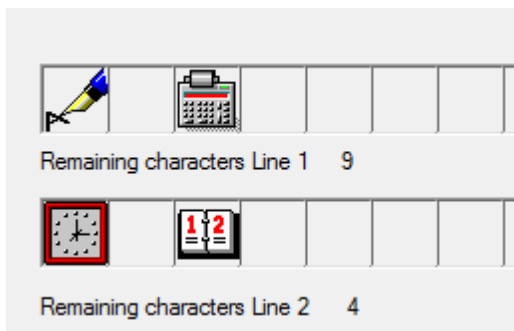
[Transfer imprints to the jetStamp 790/792](#)

[Stempelbild drucken](#)

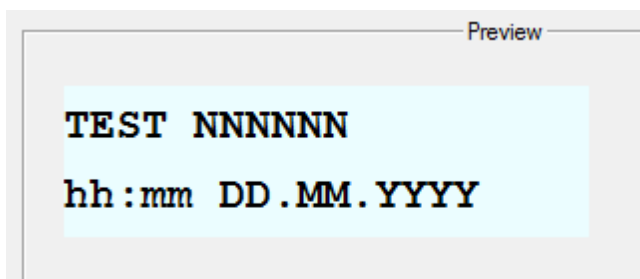
### 7.5.1 Configure imprints

- ▶ Use the arrows **g** to select the desired imprints (P : 26 to P : 29).
- ▶ Click into the text input field in the toolbar **b**.
- ▶ Enter desired text.
- ▶ Click the symbol for the **text**  and keep the mouse button pushed. Drag to the first position in the upper line of the imprints **c** and release the mouse button.
- ▶ Drag the symbol for the **numberer**  into the upper line in the same manner.
- ▶ Drag the symbol for the **time**  and **date**  into the bottom line.

The lines of the example imprint **c** now should look as in the following figure:




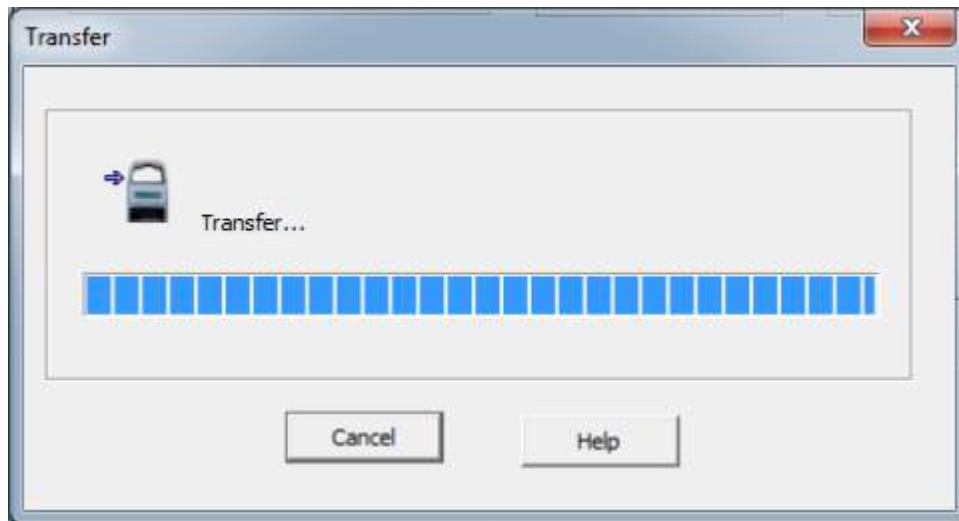
This leads to the following constellation in the preview **d**.



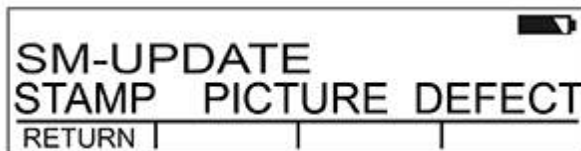


## 7.5.2 Transfer imprints to the jetStamp 790/792

- ▶ Click the **transfer symbol** .  
The transfer window appears.



After successful transfer, the following message appears in the display of the *jetStamp* 790/792 after a few seconds.



The imprints P : 26 to P : 29 were saved in the *jetStamp* 790/792 and may be printed.

- ▶ To return to the main menu, push [RETURN] thrice more.  
Main menu appears.

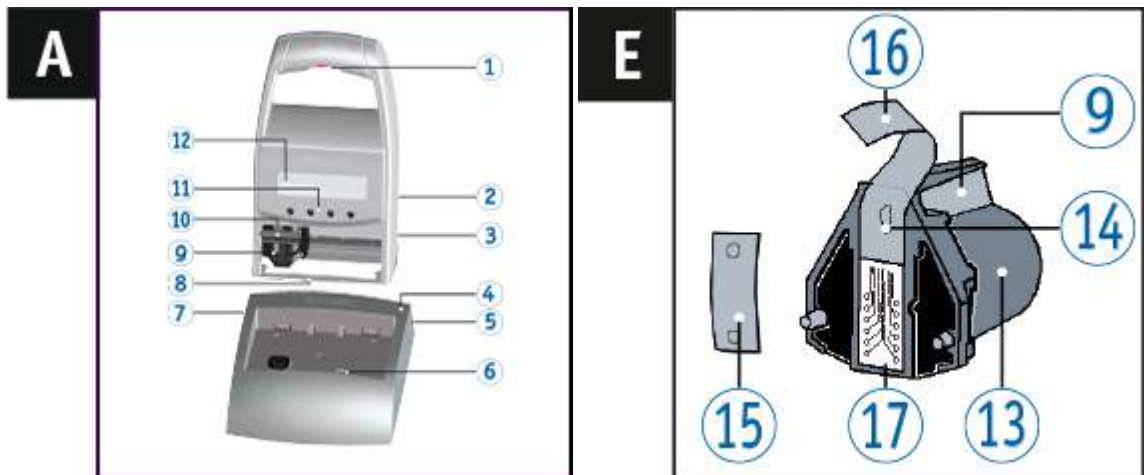
### 7.5.3 Printing imprint

**⚠ WARNING**

Danger of blinding in case of contact between ink and eyes.










- ▶ Never hold the *jetStamp* 790/792 with its nozzles 14 pointing at the face of persons!

Printing imprint ⇒ Fig. **A** + **E**



- ▶ Set desired imprint (siehe "[Selecting imprint](#)").
  - ▶ Put the device on the area to be printed on.
  - ▶ Push trigger button 1.
- The selected imprint is printed.

## 7.6 Settings objects

-  Pull the symbols for text , time , date   and numberer  into the line simply and quickly by Drag & Drop.
-  Double-click or right-click the symbols in the toolbar  to call further settings.
-  The imprints must only contain one time, date red, date blue and numberer object each. Text objects can be inserted in any number.

Up to four imprints (P: 26 to P: 29) can be generated and transmitted.  
An imprint may have up to two lines and up to 20 characters per line.

[Text](#)

[Time](#)



[Date](#)


[Numberer](#)

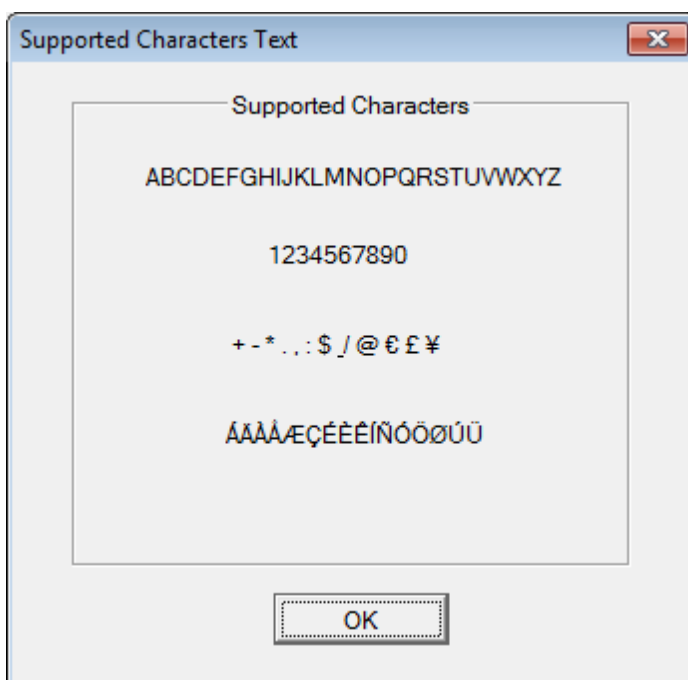
## 7.6.1 Text



The text in the text input field is inserted into the lines of the imprints by Drag and Drop a text object.

- ▶ Click in the **input field**.
- ▶ Enter text.
- ▶ Click on the symbol for the **text**  and hold down the mouse button. Drag it to the first **line** position and release the mouse button.
- ▶ To change the text, pull the **text symbol**  into the input field by Drag & Drop.

 Double-click or right-click the text symbol to display the permitted characters.



## 7.6.2 Time

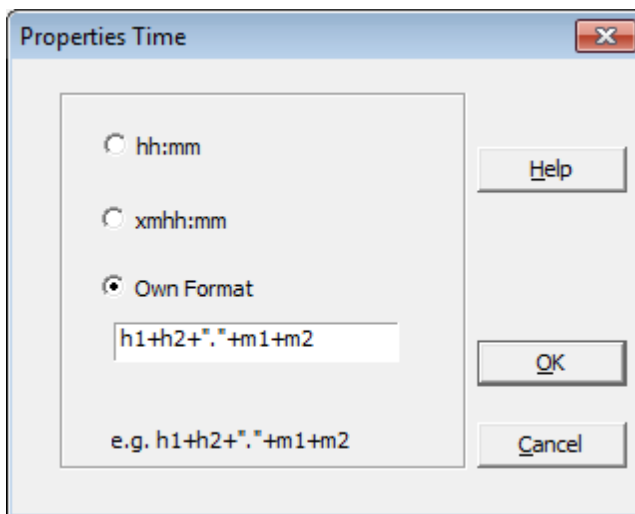


A time object can be positioned either in the first or second line.

You can choose between two formats. Additionally, it is possible to generate a user-defined format.

- ▶ To open the dialogue "Properties Time", right-click the time icon and click "Properties" or double-click the time icon .

A dialogue opens as in the following figure:



Function	Description
Own Format	Generate user-defined format.
<a href="#">Help</a>	Calling online help.
OK	The format of the time will be set as choosen.

[Define own time format](#)

### 7.6.2.1 Define own time format

You can choose between two formats. Additionally, it is possible to generate a user-defined format.



**i** Following characters can be used as separators but enclosed in Quotation marks:  
 "+", "-", "\*", ".", ",", ":", "\$", "&", "/", "@", "€", "£", "¥"

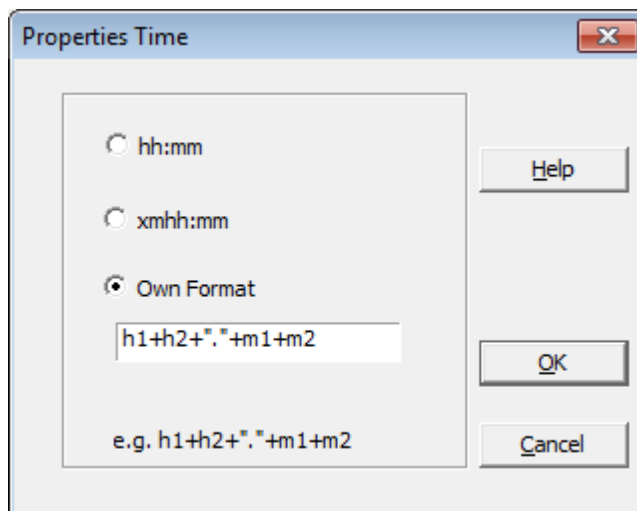
**i** Separators must be entered in quotation marks.

**i** Textblocks (e.g. h1) and characters (e.g. "/") must be connected with '+'  
 (Example: h1+h2+"/").

### Format abbreviation

Function	Description
h1	Hour with two graphics (00 to 23)
h2	Hour one of 24h - format
ah1	Hour with two graphics (01 to 12)
ah2	Hour one of 12h- format
m1	Minutes with two graphics (00 to 59)
m2	Minute one
am1	One character for twelve-hours format with the letters A or P
am2	One character for twelve-hours format with the letter M

- ▶ To open the dialogue "Properties Time", right-click the time icon  and click "Properties" or double-click the time icon .
- A dialogue opens as in the following figure:





### 7.6.3 Date



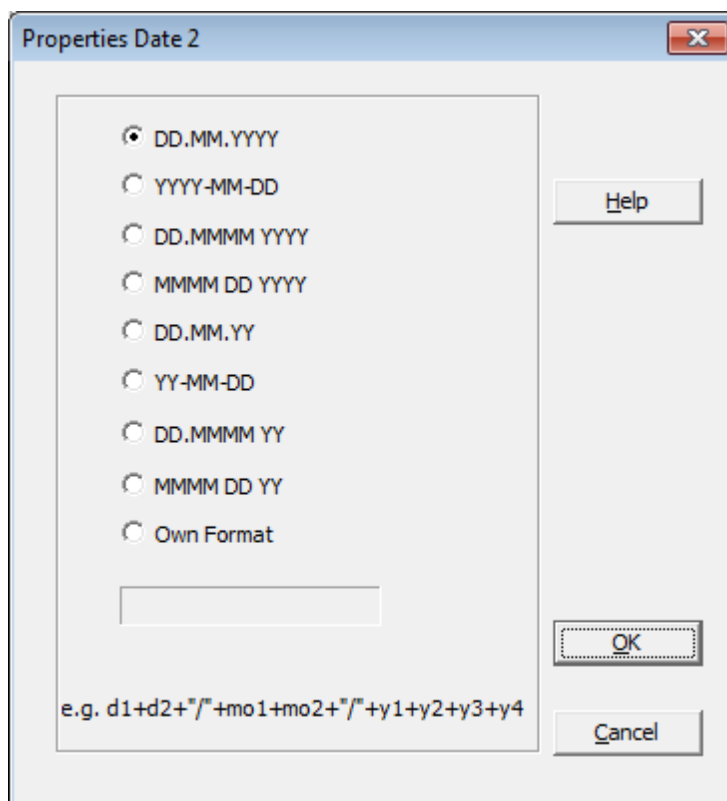
Only one date object per line is admissible. The calendar dates of the different date objects can be set deviating from each other.



You can choose between eight formats. Additionally, it is possible to generate a user-defined format.

- ▶ To open the dialogue "Properties Date", right-click the date icon  and click "Properties" or double-click the date icon .

A dialogue opens as in the following figure:



## Standard formats

Format	Description
TT.MM.JJJJ	03.06.2019
JJJJ-MM-TT	2019-06-03
TT.MMM JJJJ	03. JUN 2019
MMM TT JJJJ	JUN 03 2019
DD.MM.JJ	03.06.19
JJ-MM-TT	19-06-03
TT.MMM JJ	03. JUN 19
MMM TT JJ	JUN 03 19


### [Define own date format](#)

#### 7.6.3.1 Define own date format

You can choose between eight formats. Additionally, it is possible to generate a user-defined format.

 Following characters can be used as separators but enclosed in Quotation marks:  
 "+" "-" "\*" "." "," ":" "\$" "&" "/" "@" "€" "£" "¥"



 Separators must be entered in quotation marks.

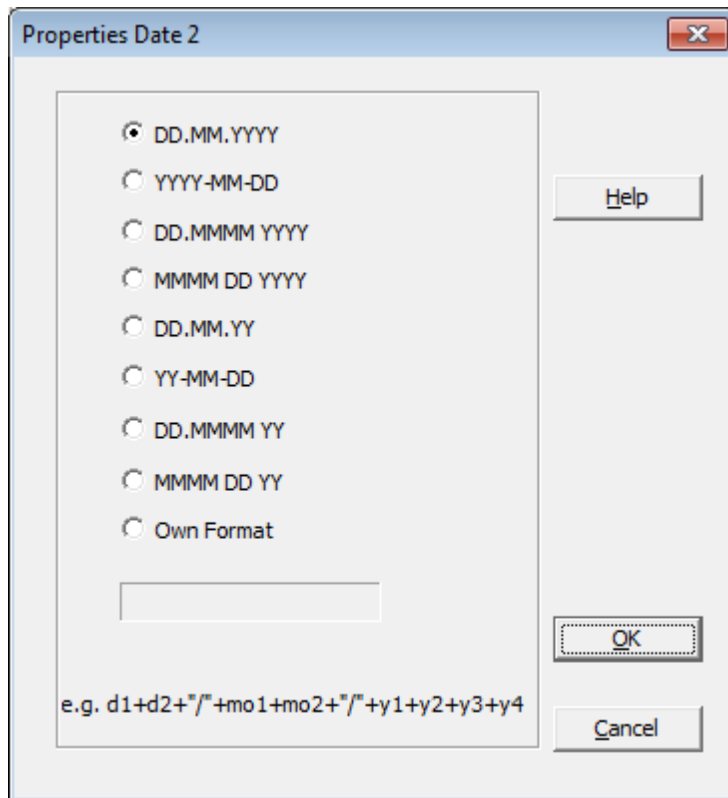
 Textblocks (e.g. d1) and characters (e.g. "/") must be connected with '+'  
 (Example: d1+d2+"/").

### Format abbreviation

Function	Description
d1	Day of the month with two graphics (01 to 31)
d2	Day one
mo1	Day of the month with two graphics (01 to 12)
mo2	Month one
ao1-ao4	Abbreviation of the month (up to 4 characters)
y1	Millenium
y2	Century
y3	Decade
y4	The complete year (0000 to 9999)



- ▶ To open the dialogue "Properties Date", right-click the date icon  and click "Properties" or double-click the date icon .
- A dialogue opens as in the following figure:




- ▶ Click "Own format".
- ▶ Enter desired format in the input field.
- ▶ Confirm prompt with **OK**.
- ▶ Pull date into a desired position by Drag & Drop.


## 7.6.4 Numberer



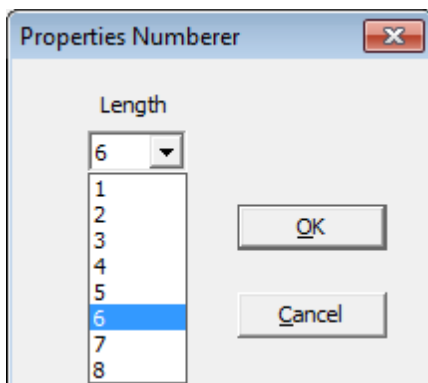
A numberer object can be positioned either in the first or second line. The numberer serves consecutive numbering.

**i** The minimum length is 1 character; the maximum length is 8 characters.

► To open the dialogue "Properties Numberer", right-click the numberer icon  and click "Properties"

or double-click the numberer icon .

A dialogue opens as in the following figure:



- Click the desired length in the dialogue field "Properties Numberer" to select the desired character length.
- Confirm prompt with **OK**.
- Pull numberer into a desired position by Drag & Drop.

## 8 Maintenance

[Replace Print Cartridge](#)

[Clean Print Cartridge Contacts](#)

[Cleaning Nozzles](#)

[Selecting cleaning interval](#)

[Cleaning print carriage](#)

[Clean Housing](#)

## 8.1 Replace Print Cartridge

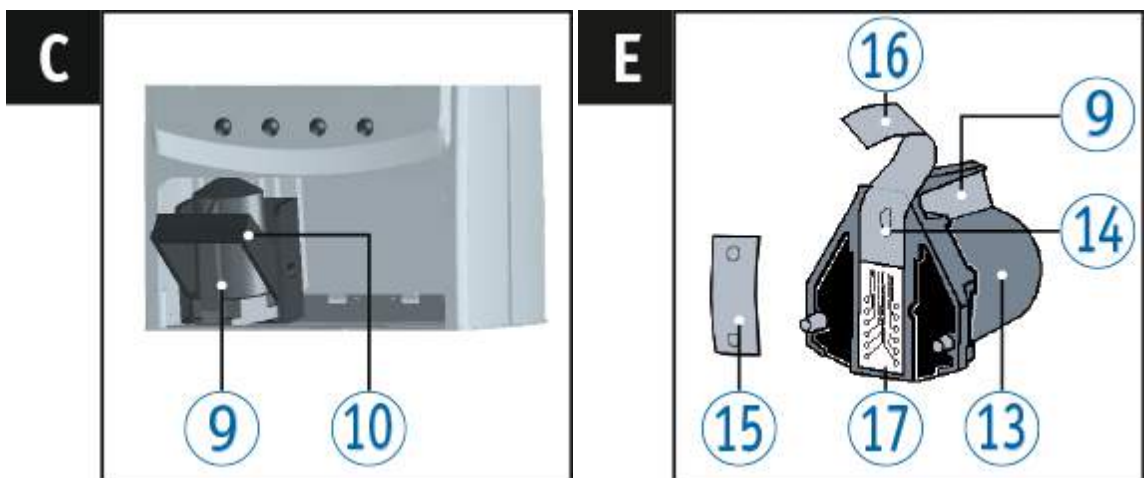
**i** When using special ink (MP), observe the notes in the operating instructions.

### **CAUTION**

Damage to health from swallowing the ink.

- ▶ Do not swallow!
- ▶ Keep the print cartridge away from children.

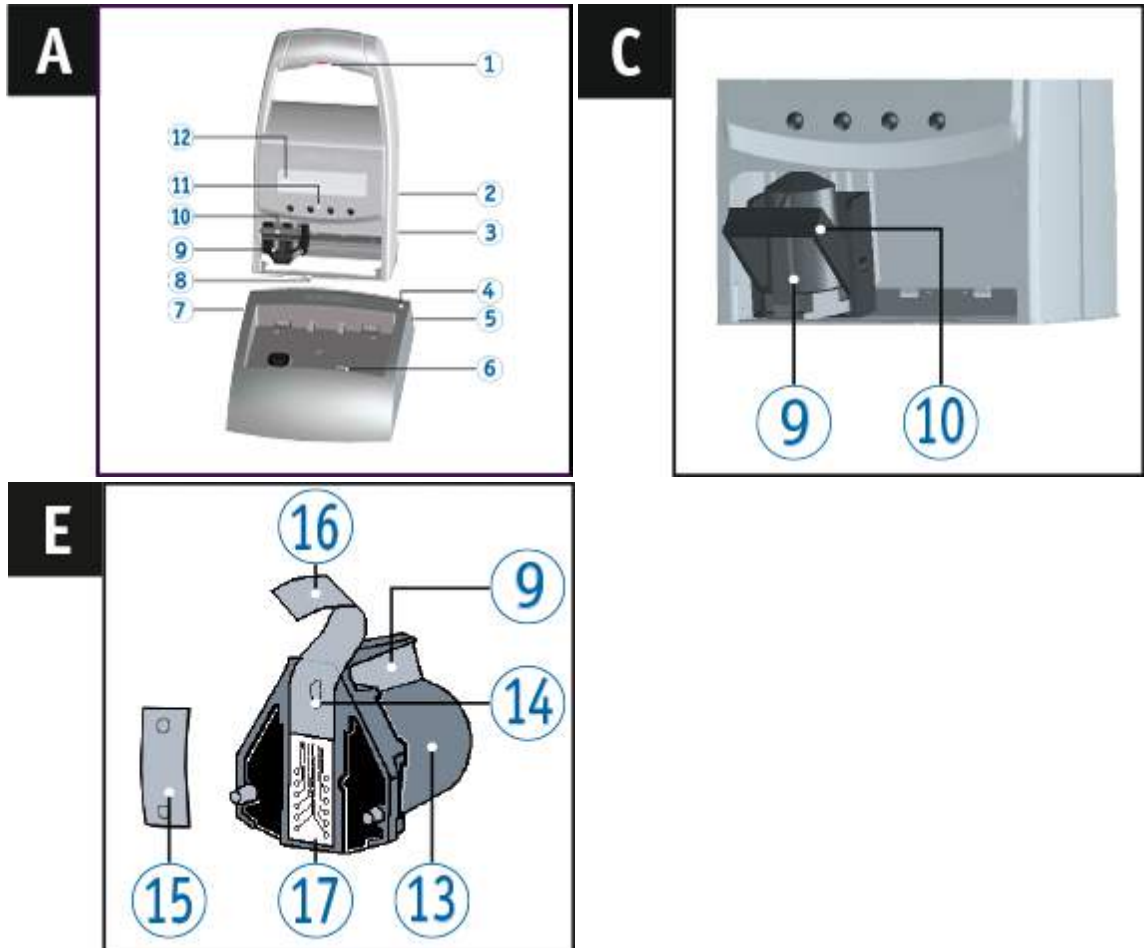
Replace Print Cartridge ⇨ Fig. **C** + **E**



- ▶ Remove the *jetStamp* 790/792 from the charging station **4**.
- ▶ Press [MODE] until [INKJET] appears in the display menu bar.
- ▶ Press [INKJET].  
The print carriage moves into a central position.
- ▶ Push the locking rail **10** as far back as it will go.
- ▶ Take the new cartridge **13** from its packaging and remove the protective film **16** from nozzles **14** or Clip.
- ▶ When using standard ink hold the small felt pad **15** that is provided, against the cartridge nozzles **14** until some ink appears on the felt.
- ▶ Holding the cartridge handle **9**, insert the cartridge **13** into the print carriage.
- ▶ Pull the locking rail **10** forward again until it locks into place.
- ▶ Press [INKJET].  
The print carriage moves to the stamping position.

## 8.2 Clean Print Cartridge Contacts

Clean Print Cartridge Contacts ⇨ Fig. **A** + **C** + **E**



In rare cases, contamination at the cartridge contacts **17** may cause defective print results.

- ▶ Remove cartridge **13**.
- ▶ Clean cartridge contacts **17** at the cartridge **13** and the printing carriage with a soft cloth that may have been slightly moistened with ethanol (spirit).

## 8.3 Cleaning Nozzles

If there is stripe formation or if any problems occur with the print quality, there may be dried ink in the nozzles <sup>14</sup>.

To warrant high print quality, the nozzles <sup>14</sup> should be cleaned at regular intervals.

**i** For notes on temperatures and humidity, see "[Technical Data](#)" and in the accompanying documents of the cartridges.

**i** To avoid drying of the ink at the nozzles <sup>14</sup>, adjust the cleaning interval to the climatic conditions of the environment (siehe "[Selecting cleaning interval](#)").

[Automatic Cleaning of Nozzles](#)

[Manual Nozzle Cleaning](#)

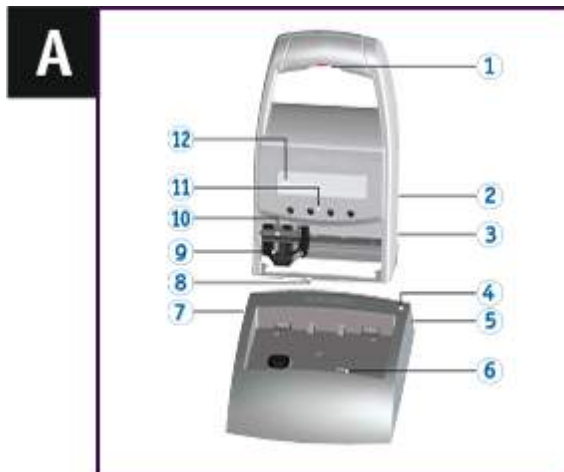
### 8.3.1 Automatic Cleaning of Nozzles



Danger of blinding in case of contact between ink and eyes.

▶ Never hold the *jetStamp* 790/792 with its nozzles <sup>14</sup> pointing at the face of persons!

**Automatic Cleaning of Nozzles** ⇨ Fig. **A**

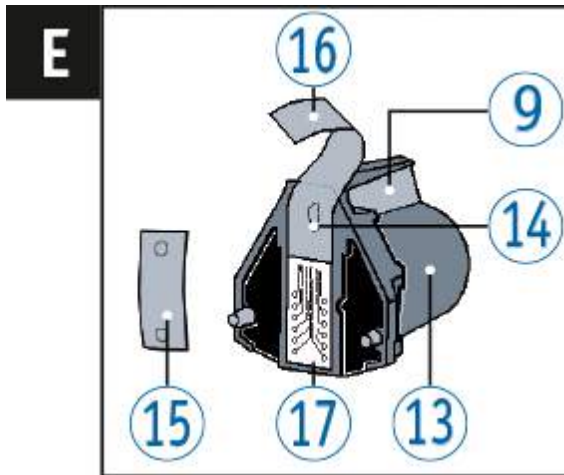


**i** A small amount of ink is ejected to clean the nozzles <sup>14</sup>.

- ▶ Put *jetStamp* 790/792 in charging station <sup>4</sup>.
- ▶ Push [MODE] until the display menu bar [CLEAN] appears.
- ▶ To start cleaning, push [CLEAN].

### 8.3.2 Manual Nozzle Cleaning

Manual Nozzle Cleaning ⇨ Fig. **E**



If automatic nozzle cleaning does not bring the desired result, we recommend the following measure:

- ▶ To loosen the dried ink, gently wipe a soft cloth possibly moistened slightly with Ethanol (spirit) against the nozzles **14** for approx. three seconds.
- ▶ Dab off dissolved ink and wipe dry the nozzles **14**.

## 8.4 Selecting cleaning interval

The duration until possible drying of the ink at the nozzles depends on the ambience temperature and humidity. At the corresponding configuration, the *jetStamp 790/792* performs self-cleaning of the nozzles at regular intervals. Small amounts of ink are ejected here. At increased temperatures and low humidity, the cleaning interval must be increased accordingly.

Proceed as in Menu access (see "[Menu access](#)").

- ▶ Press [NEXT] until "CLEAN INTERVAL" appears.
- ▶ To adjust the cleaning strength, press [CALL].
- ▶ To **increase** the number value, press [INC].
- ▶ To **decrease** the number value, press [DEC].
  - 0 = No cleaning
  - 1 = Standard cleaning
  - 2 = Mid-strength cleaning
  - 3 = Strong cleaning
- ▶ To move directly to the next menu item, press [RETURN] once.
  - OR -
- ▶ To save changes and to return to the main menu, press [RETURN] three times.
  - The main menu appears.

## 8.5 Cleaning print carriage

Ink and dried ink residues on the print carriage can be removed using a soft cloth, soaked in methylated spirit.

## 8.6 Clean Housing

### CAUTION

Danger of electric shock when liquids enter the inside of the device.

- ▶ Pull the mains adapter from the socket.
- ▶ Inform specialist dealer or REINER service.

### NOTICE

Aggressive cleaning agents may damage the housing surface.

- ▶ Do not use abrasives and plastic-dissolving detergents for cleaning.
- ▶ Clean the housing surface of the device with a soft cloth if required. Slightly moisten the cloth in water with mild detergent at stronger contamination.



## 9 Recognising and Removing Interferences

[Operating and fault messages](#)

[Reset-Taste](#)

[Troubleshooting typical errors for 790 PCset easy](#)

### 9.1 Operating and fault messages

Display	Cause	Removal
Dark display/ Lines in the display	Display fault	▶ Press the Reset button <sup>3</sup>
CHARGE BATTERY NO IMPRINT POSSIBLE	Batteries are discharged	▶ Charged batteries
EMPTY BATTERY NO IMPRINT POSSIBLE	Battery is empty	▶ Charge batteries
IMPRINT BLOCKED	Print triggering is blocked	▶ Press [QUIT]
WRONG STATION	Incorrect charging station	▶ Press [QUIT]
ERROR 04	Memory error	▶ Press [QUIT]
ERROR 09	- Sensor or motor faulty - Print carriage blocked	▶ Press [QUIT]

### 9.2 Reset button

Carrying out a device reset causes various settings to be lost, e.g. date and time or the battery capacity display. The *jetStamp* 790/792 must then be inserted into the charging station <sup>4</sup> for about three hours in order to synchronise the battery capacity display.

After a total discharge of the battery, strange characters can appear on the display during charging. Pressing the reset button <sup>3</sup> resolves this issue.

### 9.3 Troubleshooting typical errors for 790 PCset easy

Error message	Removal	Notes
Missing Device Drivers	<ul style="list-style-type: none"> <li>▶ Install the 790 PCset easy</li> <li>- O -</li> <li>▶ Install the driver "USB-driver_Win_Vista_xP" from the CD</li> </ul>	<ul style="list-style-type: none"> <li>- <i>jetStamps</i> with a serial number above 5000 have a USB interface</li> <li>- <i>jetStamps</i> with a serial number below 5000 have a COM interface</li> </ul>
Running the software first time	<ul style="list-style-type: none"> <li>▶ Set the COM interface</li> </ul>	<ul style="list-style-type: none"> <li>- The imprints P : 26 to P : 29 are empty</li> <li>- Standard settings are used for time, date and numberer properties</li> </ul>
The Imprint ... is damaged		Damaged files are automatically deleted and empty imprints are displayed
The file can not be read		Damaged files are automatically deleted and empty imprints are displayed
The file is write protected		No rights present
COMxx could not be opened		<ul style="list-style-type: none"> <li>- Port cannot be opened</li> <li>- Port is used by another device</li> </ul>
COMxx does not exist		<ul style="list-style-type: none"> <li>- Port does not exist</li> <li>- Port is used by another device</li> </ul>

## 10 Technical Data and Accessories


[Rating Plate](#)

[Technical Data](#)

[Transport and Disposal](#)

[Accessories](#)

### 10.1 Rating Plate

 Observe the rating plate before the device is connected.

The rating plate is located on the bottom of the device.  
The following information has the following meaning:

Mod. = Model designation of your electronic stamp

Nr. = Part number of your electronic stamp

GEPR. = Testing date



= *jetStamp* 790/792 has the CE-mark according to the currently valid low-voltage and EMC directive.



= *jetStamp* 790/792 is produced according to the safety standards IEC/EN 60950-1.



#### **Electrical and electronic waste devices**

Waste devices must not be disposed of in the conventional household waste. They must be returned to a special collection point for recycling of electrical and electronic devices.



## 10.2 Technical Data

<b>Technical Data</b>	
Dimensions, stamp only	80 x 96 x 170 mm (L x W x H)
Dimensions, charging station	141 x 115 x 36 mm (L x W x H)
Total height	192 mm
Weight, stamp only	ca. 450 g
Weight, charging station	ca. 370 g
Stamping time	approx. 0.7 seconds
Stamping cycle	> 2 seconds
Battery capacity	approx. 500 prints
Print technology	inkjet
Ambience temperature for operation	
With standard cartridges	10 °C ... +40 °C
With MP cartridges	10 °C ... +40 °C
Humidity for operation	
With standard cartridges	10 % ... 80 % relative humidity
With MP cartridges	8 % ... 80 % relative humidity
Temperature for storage	
With standard cartridges	10 °C ... +40 °C
With MP cartridges	10 °C ... +25 °C
Humidity for storage	
With standard cartridges	10 % ... 80 % relative humidity
With MP cartridges	5 % ... 80 % relative humidity
Temperature for transport	
With standard cartridges	-5 °C ... 55 °C (up to 24 hours)
With MP cartridges	-20 °C ... +25 °C (up to 24 hours)
Humidity for transport	
With standard cartridges	10 % ... 80 % relative humidity
With MP cartridges	8 % ... 80 % relative humidity
Data transfer	USB
Power supply	4 x AAA NiMH rechargeable battery, can be charged through enclosed mains adapter. 230 V ~ 50 Hz / 0,4 A AC
Standby time per battery charge	approx. 6 days
Battery charge time	approx. 6 hours
Print capacity per print cartridge	approx. 300,000 characters
Noise level	< 60 dB (A) (Workplace related emission value in accordance with ISO 7779)
Protection type	IP 20

## 10.3 Transport and Disposal

### Transport

#### NOTICE

Damage to the device at improper transport.

- ▶ Only use packaging that protects the device from impact and hits!

### Disposal



#### Defective or flat batteries

Flat batteries of rechargeable batteries must not be disposed of in the household waste.



#### Electrical and electronic waste devices

Waste devices must not be disposed of in the conventional household waste. They must be returned to a special collection point for recycling of electrical and electronic devices.



## 10.4 Accessories

### Inkjet-Inkjet cartridges

- Best.-Nr. P1-S-BK: 801 307 - 000
- Best.-Nr. P1-S-RD: 801 307 - 050

### Inkjet cartridges MP2 (quick drying)

- Best.-Nr. P1-MP2-BK: 791 060 - 000
- Best.-Nr. P1-MP2-RD: 791 060 - 001

## 11 Contact

### **Ernst Reiner GmbH & Co. KG**

Baumannstr. 16

78120 Furtwangen/Germany

Phone: +49 7723 657-0

Fax: +49 7723 657-200

Email [reiner@reiner.de](mailto:reiner@reiner.de)

[www.reiner.de](http://www.reiner.de)

© 2015 Ernst Reiner GmbH & Co. KG

All rights reserved. Translation, reprint and other reproduction of these operating instructions, even in parts and no matter the form, shall require our express written consent. We reserve the right to make content changes to these operating instructions without notice.

## 12 Operating Manual

**REINER**

*jetStamp 790/790 MP*  
*jetStamp 792/792 MP*



Bedienungsanleitung

DE

Operating Manual

GB

Manual de instrucciones

ES

Mode d'emploi

FR

Manual de instruções

PT

Istruzioni per l'uso

IT

Operating Manual GB

# Index

## - A -

Accessories 69

## - C -

Charging the batteries 14

Contact 70

## - D -

Date 55

## - E -

Example Workflow: Generate imprint 48

    Configure imprints 48

    Printing imprint 50

    Transfer imprints 49

## - I -

Inserting Printing Cartridge 17

Inserting the batteries 13

Installing software 23

## - M -

Maintenance 59

    Clean Housing 64

    Clean Print Cartridge Contacts 61

    Cleaning Nozzles 62

    Cleaning print carriage 64

    Selecting cleaning interval 63

## - N -

Numberer 58

## - O -

Objects 47

Operating Element 6

Operating Interface 41

    Menu bar 42

Objects 47

Toolbar 43

## - R -

Recognising 65

Replace Print Cartridge 60

## - S -

Safety, Description 9

Settings objects 51

    Date 55

    Numberer 58

    Text 52

    Time 53

## - T -

Technical Data 68

Text 52

Time 53





**REINER**

[www.reiner.de](http://www.reiner.de)

